



# VDI 3425 (DIN 69880)

## Werkzeugaufnahmen

Toolholders

Porte-outils

Takım Tutucular

INHALTSVERZEICHNIS / INDEX	Seite / Page
<b>Werkzeughalter / Rohling,rund - Round soft blank</b> Ronde mou blanc - Özel takım yapma amaçlı yanmamul	5.02
<b>Radial Werkzeughalter - Radial toolholder</b> Porte-outil radial - Radyal kater tutucu	5.02 - 5.06
<b>Axial Werkzeughalter - Axial toolholder</b> Porte-outil axial - Eksenel kater tutucu	5.06 - 5.08
<b>Vierkant / Aufnahme - Square toolholder</b> Tige carre- Çok yönlü kater tutucu	5.08 - 5.09
<b>Bohrerhalter E1 - Boring holder E1</b> Porte foret pour foret E1 - Takma uçlu U diril tutucu E1	5.09 - 5.10
<b>Bohrerhalter E2 - Boring bar holder E2</b> Porte-outils pour barre E2 - Delik kater kutucu E2	5.11 - 5.12
<b>Spannzangenhalter - Collet holder</b> Porte-outils pour pinces - Pens başlığı	5.13 - 5.14
<b>Bohrerhalter für MK F1 - Holder for morse taper F1</b> Porte foret pour morse F1 - Mors konik tutucu F1	5.15
<b>NC Bohrfutter - NC Drill chuck</b> Mandrin de perçage CNC - NC mandren Malafası	5.16
<b>Gewindeschneidfutter - Quick change tapping chuck</b> Appareil à taraduer - Kılavuz çekme başlığı	5.17
<b>Kontrolldorne - Test arbors</b> Mandrin de contrôle - Kontrol mastarı	5.18
<b>Einrichtehalter - Setting-holder</b> Porte outil de réglage - Pozisyon kontrol mastarı	5.18
<b>Hydro - Dehnspannfutter - Hydraulic expansions chuck</b> Mandrins expansibles hydrauliques - Hidrolik Takım Tutucular	5.19
<b>Schutzstopfen - Protective plug</b> Bouchon de protection - Kör tapa	5.20



VDI 3425  
(DIN 69880)

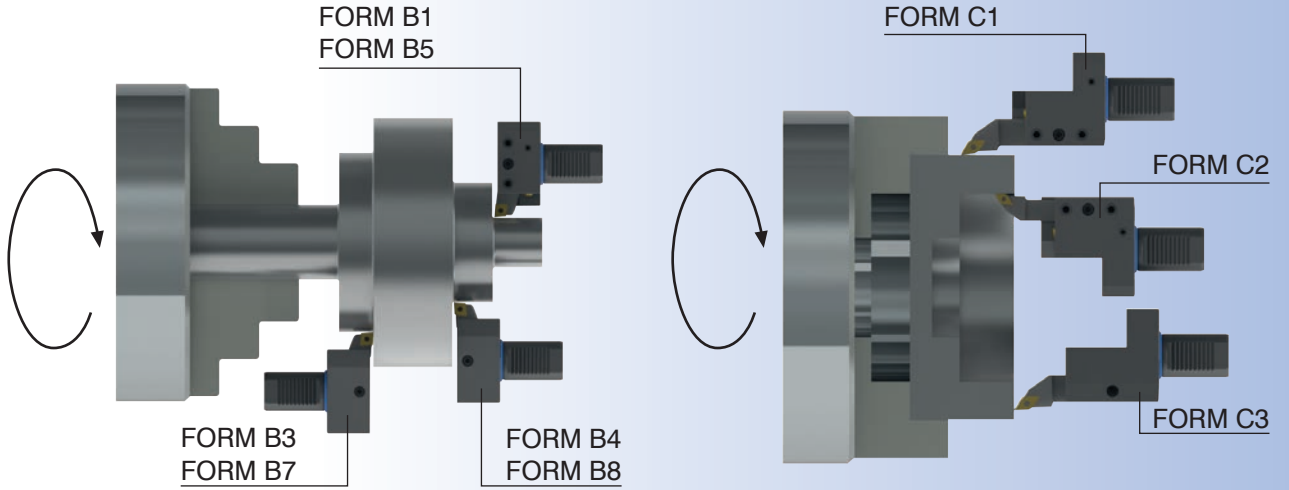


## Einsatz von Radial-Werkzeughaltern bei linker Spindeldrehrichtung

Insert for Radial Toolholders left Spindle Movement

Emploi de porte-outils radiaux, rotation de broche antihoraire

Fener milinin sol dönüş yönü için radyal tutucu

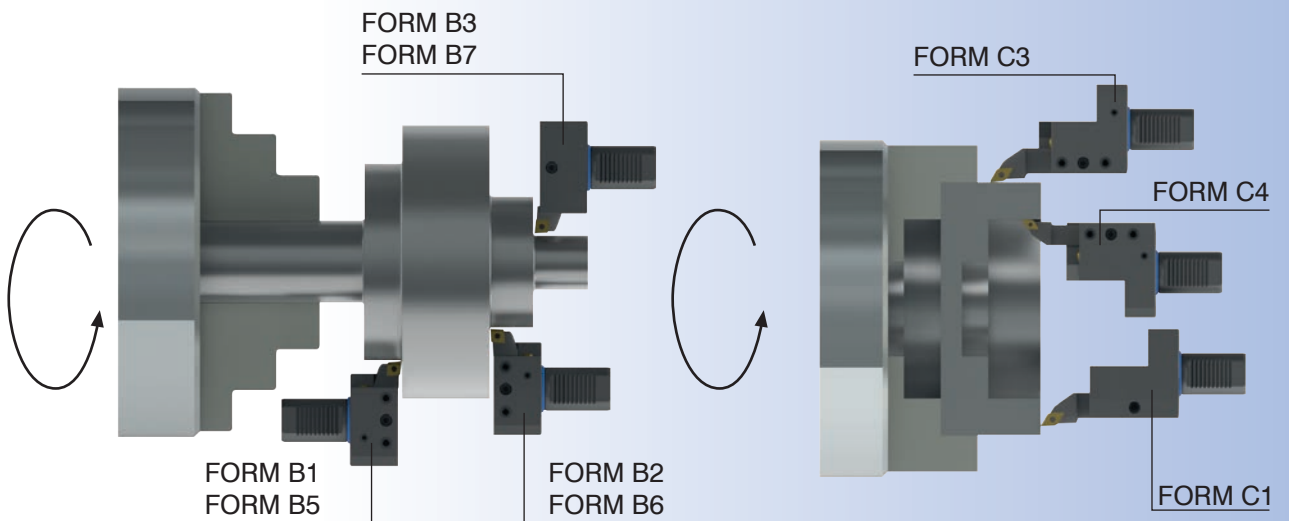


## Einsatz von Radial-Werkzeughaltern bei rechter Spindeldrehrichtung

Insert for Radial Toolholders right Spindle Movement

Emploi de porte-outils radiaux, rotation de broche horaire

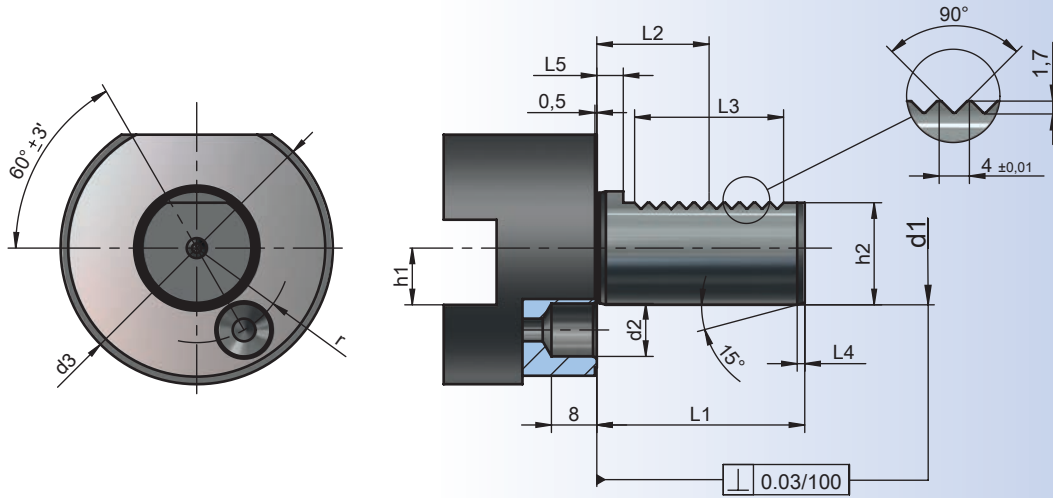
Fener milinin sağ dönüş yönü için radyal tutucu



## Toolholders

## Porte-outils

## Şaft ölçüleri



d1 h6	h1 max	d2	d3	h2 ± 0,1	r ± 0,02	L1 max.	L2 ± 0,05	L3 min.	L4 +1	L5
16	12	8	40	15,0	14,5	32	12,7	16	2	3,5
20	16	10	50	18,0	18,0	40	21,7	24	2	7,0
25	16	10	58	23,5	21,0	48	21,7	24	2	7,0
30	20	14	68	27,0	25,0	55	29,7	40	2	7,0
40	25	14	83	36,0	32,0	63	29,7	40	3	7,0
50	32	16	98	45,0	37,0	78	35,7	48	3	8,0

**Ausführung** : Die Werkzeughalter sind aus legiertem Einsatzstahl HRC 52 ± 2 komplett brüniert und präzisionsgeschliffen. Ra 0,3  
Sämtliche Werkzeughalter haben eine große verstellbare Kugelspritzdüse und Gewindeanschluß für Rohrverschraubung, bzw. externer Kühlmittelzufuhr.

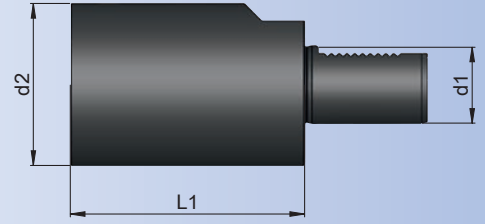
**Description** : The tools are manufactured of hardened steel with a hardness of HRC 52 ± 2  
The shaft teeth surface and the holder are grinded. Ra 0,3  
All tool holders have a big movable coolant nozzle and a thread for external coolant.

**Execution** : Les porte-outils sont fabriqués en trempés à HRC 52 ± 2 et entièrement brunis.  
La queue de fixation, la denture, la face d'appui et le logement de l'outil sont rectifiés. Ra 0,3  
Tous les porte-outils ont une balle d'arrosage avec un grand angle d'orientation et un trou taraudé pour un arrosage par externe.

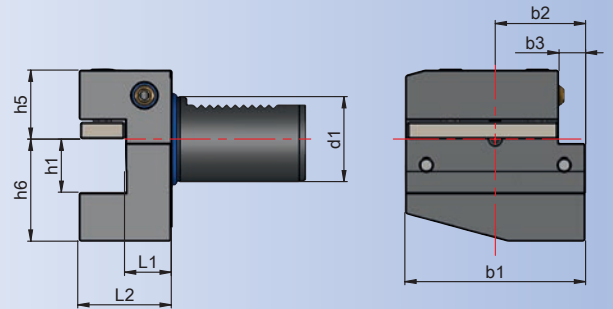
**Teknik özelliği:** Takım tutucular alaşımli çelikten yapılmaktadır. HRC 52 ± 2  
Tamamen siyahlaştırılmıştır ve hassas taşlanmıştır. Ra 0,3  
Bütün takımlarda ayarlanabilir soğutucu gözler mevcuttur.  
Aynı zamanda dıştan soğutma borularının bağlantı dişleri mevcuttur

**Round soft blank, Form A2****Ronde mou blanc (vide), Forme A2****Özel takım yapma amaçlı yarımamul, A2 Formu**

Bestell-Nr. Order Nr. Référence Sipariş Nr.	Abmessung Size / Dimension Size / Cinsi d1 x L1	d2	L1	Euro
169.17.40.60	16 x 60	40	60	
209.17.50.70	20 x 70	50	70	
259.17.58.80	25 x 80	58	80	
259.17.58.200	25 x 200	58	200	
309.17.68.100	30 x 100	68	100	
309.17.68.240	30 x 240	68	240	
409.17.83.120	40 x 120	83	120	
409.17.83.320	40 x 320	83	320	
509.17.98.135	50 x 135	98	135	
509.17.98.400	50 x 400	98	400	

**Radial - Toolholder Form B1 right, short****Porte - outil radial Forme B1 droite, court****Radyal kater tutucu B1 Formu sağ, kısa**

Bestell-Nr. Order Nr. Référence Sipariş Nr.	Abmessung Size / Dimension Size / Cinsi d1 x h1 x L2	L1	b1	b2	b3	h5	h6	Euro
169.31.12	16x12x24	13	42	23	5	20	22	
209.31.16	20x16x30	16	55	30	7	25	30	
259.31.16	25x16x30	16	55	30	7	25	30	
309.31.20	30x20x40	22	70	35	10	28	38	
409.31.25	40x25x44	22	85	42,5	12,5	32,5	48	
509.31.32	50x32x55	30	100	50	16	35	60	

**Zubehör / Accessories / Accessoires / Yedekler**

Unterlegplatte  
Shim  
Plaque entretoise  
Kater laması



Kunststoff - Kugelspritzdüse  
Plastic ball sprayer nozzle  
Buse d'injection spherique en plastique  
Su verme misketi

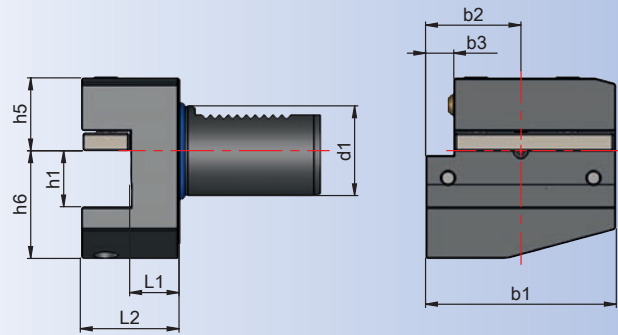


## Radial - Toolholder Form B2 left, short

## Porte - outil radial Forme B2 gauche, court

## Radyal kater tutucu B2 Formu sol, kısa

Bestell-Nr. Order Nr. Référence Sipariş Nr.	Abmessung Size / Dimension Size / Cinsi d1 x h1 x L2	L1	b1	b2	b3	h5	h6	Euro
169.32.12	16x12x24	13	42	23	5	20	22	
209.32.16	20x16x30	16	55	30	7	25	30	
259.32.16	25x16x30	16	55	30	7	25	30	
309.32.20	30x20x40	22	70	35	10	28	38	
409.32.25	40x25x44	22	85	42,5	12,5	32,5	48	
509.32.32	50x32x55	30	100	50	16	35	60	



## Zubehör / Accessories / Accessoires / Yedekler

	Unterlegplatte Shim Plaque entretoise Kater lamasi		Kunststoff - Kugelspritzdüse Plastic ball sprayer nozzle Buse d'injection spherique en plastique Su verme misketi
--	---	--	--

## Radial - Werkzeughalter Form B3 Überkopf rechts, kurz

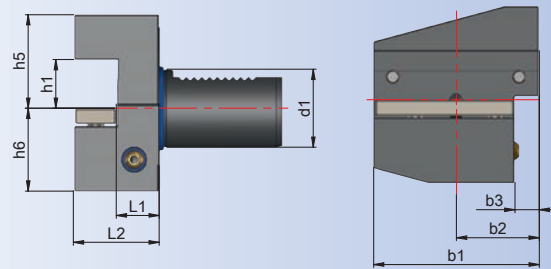
## VDI 3425 B3

## Radial - Toolholder Form B3 Overhead right, short

## Porte - outil radial Forme B3 inversé droite, court

## Radyal kater tutucu B3 Formu ters sağ, kısa

Bestell-Nr. Order Nr. Référence Sipariş Nr.	Abmessung Size / Dimension Size / Cinsi d1 x h1 x L2	L1	b1	b2	b3	h5	h6	Euro
169.33.12	16x12x24	13	42	23	5	22	20	
209.33.16	20x16x30	16	55	30	7	30	25	
259.33.16	25x16x30	16	55	30	7	30	25	
309.33.20	30x20x40	22	70	35	10	38	35	
409.33.25	40x25x44	22	85	42,5	12,5	48	42,5	
509.33.32	50x32x55	30	100	50	16	60	50	



## Zubehör / Accessories / Accessoires / Yedekler

	Unterlegplatte Shim Plaque entretoise Kater lamasi		Kunststoff - Kugelspritzdüse Plastic ball sprayer nozzle Buse d'injection spherique en plastique Su verme misketi
--	---	--	--



## Radial - Werkzeughalter Form B4 Überkopf links, kurz

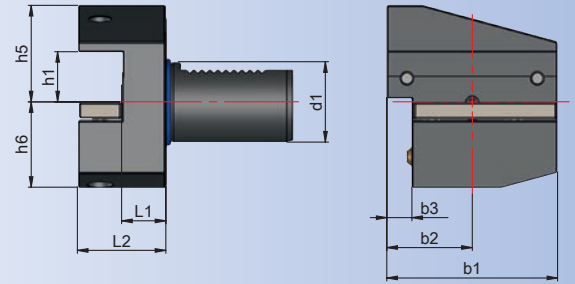
VDI 3425 B4

Radial - Toolholder Form B4 Overhead left, short

Porte - outil radial Forme B4 inversé gauche, court

Radyal kater tutucu B4 Formu ters sol, kısa

Bestell-Nr. Order Nr. Référence Sipariş Nr.	Abmessung Size / Dimension Size / Cinsi d1 x h1 x L2	L1	b1	b2	b3	h5	h6	Euro
169.34.12	16x12x24	13	42	23	5	22	20	
209.34.16	20x16x30	16	55	30	7	30	35	
259.34.16	25x16x30	16	55	30	7	30	35	
309.34.20	30x20x40	22	70	35	10	38	35	
409.34.25	40x25x44	22	85	42,5	12,5	48	42,5	
509.34.32	50x32x55	30	100	50	16	60	50	



### Zubehör / Accessories / Accessoires / Yedekler



Unterlegplatte  
Shim  
Plaque entretoise  
Kater lamasi



Kunststoff - Kugelspritzdüse  
Plastic ball sprayer nozzle  
Buse d'injection spherique en plastique  
Su verme misketi

## Radial - Werkzeughalter Form B5 rechts, lang

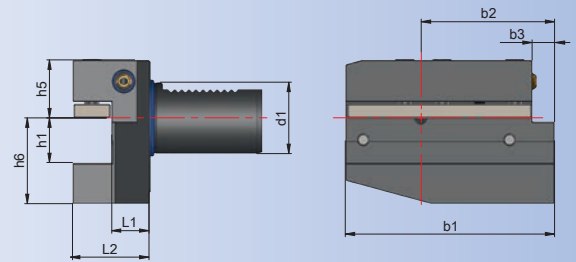
VDI 3425 B5

Radial - Toolholder Form B5 right, long

Porte - outil radial Forme B5 droite, long

Radyal kater tutucu B5 Formu sağ, uzun

Bestell-Nr. Order Nr. Référence Sipariş Nr.	Abmessung Size / Dimension Size / Cinsi d1 x h1 x L2	L1	b1	b2	b3	h5	h6	Euro
169.35.12	16x12x24	13	58	39	5	20	22	
209.35.16	20x16x30	16	75	50	7	25	30	
259.35.16	25x16x30	16	75	50	7	25	30	
309.35.20	30x20x40	22	100	65	10	28	38	
409.35.25	40x25x44	22	118	75,5	12,5	32,5	48	
509.35.32	50x32x55	30	130	80	16	35	60	



### Zubehör / Accessories / Accessoires / Yedekler



Unterlegplatte  
Shim  
Plaque entretoise  
Kater lamasi



Kunststoff - Kugelspritzdüse  
Plastic ball sprayer nozzle  
Buse d'injection spherique en plastique  
Su verme misketi

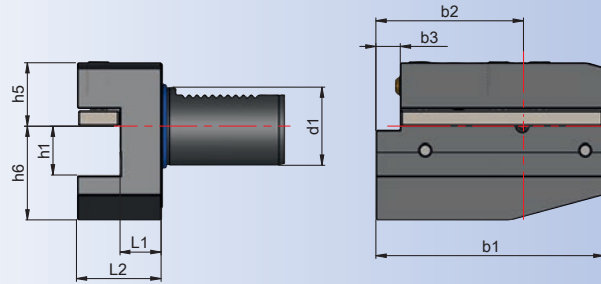


## Radial - Toolholder Form B6 left, long

## Porte - outil radial Forme B6 inversé gauche, long

## Radyal kater tutucu B6 Formu sol, uzun

Bestell-Nr. Order Nr. Référence Sipariş Nr.	Abmessung Size / Dimension Size / Cinsi d1 x h1 x L2	L1	b1	b2	b3	h5	h6	Euro
169.36.12	16x12x24	13	58	39	5	20	22	
209.36.16	20x16x30	16	75	50	7	25	30	
259.36.16	25x16x30	16	75	50	7	25	30	
309.36.20	30x20x40	22	100	65	10	28	38	
409.36.25	40x25x44	22	118	75,5	12,5	32,5	48	
509.36.32	50x32x55	30	130	80	16	35	60	



## Zubehör / Accessories / Accessoires / Yedekler



Unterlegplatte  
Shim  
Plaque entretoise  
Kater laması



Kunststoff - Kugelspritzdüse  
Plastic ball sprayer nozzle  
Buse d'injection spherique en plastique  
Su verme misketi

## Radial - Werkzeughalter Form B7 Überkopf rechts, lang

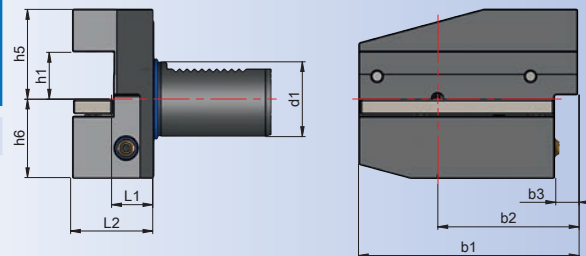
## VDI 3425 B7

## Radial - Toolholder Form B7 Overhead right, long

## Porte - outil radial Forme B7 inversé droite, long

## Radyal kater tutucu B7 Formu kafaüstü sağ, uzun

Bestell-Nr. Order Nr. Référence Sipariş Nr.	Abmessung Size / Dimension Size / Cinsi d1 x h1 x L2	L1	b1	b2	b3	h5	h6	Euro
169.37.12	16x12x24	13	58	39	5	22	20	
209.37.16	20x16x30	16	75	50	7	30	25	
259.37.16	25x16x30	16	75	50	7	30	25	
309.37.20	30x20x40	22	100	65	10	38	35	
409.37.25	40x25x44	22	118	75,5	12,5	48	42,5	
509.37.32	50x32x55	30	100	50	16	60	35	



## Zubehör / Accessories / Accessoires / Yedekler



Unterlegplatte  
Shim  
Plaque entretoise  
Kater laması



Kunststoff - Kugelspritzdüse  
Plastic ball sprayer nozzle  
Buse d'injection spherique en plastique  
Su verme misketi



## Radial - Werkzeughalter Form B8 Überkopf links, lang

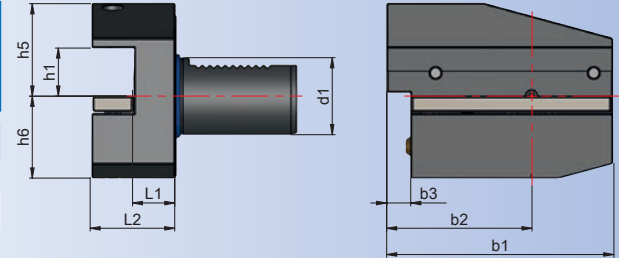
VDI 3425 B8

Radial - Toolholder Form B8 Overhead left, long

Porte - outil radial Forme B8 inversé gauche, long

Radyal kater tutucu B8 Formu kafaüstü sol, uzun

Bestell-Nr. Order Nr. Référence Sipariş Nr.	Abmessung Size / Dimension Size / Cinsi d1 x h1 x L2	L1	b1	b2	b3	h5	h6	Euro
169.38.12	16x12x24	13	58	39	5	22	20	
209.38.16	20x16x30	16	75	50	7	30	25	
259.38.16	25x16x30	16	75	50	7	30	25	
309.38.20	30x20x40	22	100	65	10	38	35	
409.38.25	40x25x44	22	118	75,5	12,5	48	42,5	
509.38.32	50 x 32 x 55	30	130	80	16	60	50	



### Zubehör / Accessories / Accessoires / Yedekler



Unterlegplatte  
Shim  
Plaque entretoise  
Kater laması

9.44



Kunststoff - Kugelspritzdüse  
Plastic ball sprayer nozzle  
Buse d'injection spherique en plastique  
Su verme misketi

9.50

## Axial - Werkzeughalter Form C1 rechts

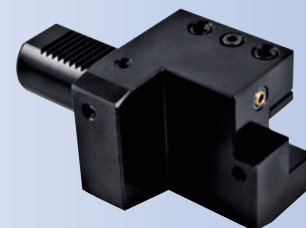
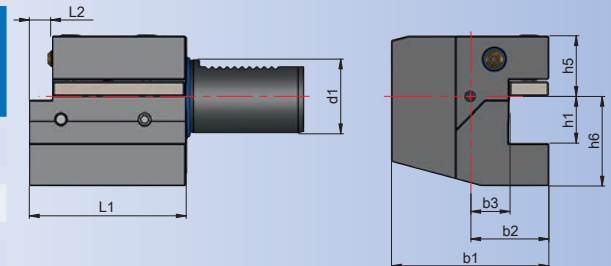
VDI 3425 C1

Axial - Toolholder Form C1 right

Porte - outil Axial Forme C1 droite

Eksenel kater tutucu C1 Formu sağ

Bestell-Nr. Order Nr. Référence Sipariş Nr.	Abmessung Size / Dimension Size / Cinsi d1 x h1	b1	b2	b3	L1	L2	h5	h6	Euro
169.41.12	16 x 12	43	24	13	44	5	20	22	
209.41.16	20 x 16	52	27	13	50	7	25	30	
259.41.16	25 x 16	58	33	19	55	7	25	30	
309.41.20	30 x 20	70	35	17	70	10	28	38	
409.41.25	40 x 25	85	42,5	21	85	12,5	32,5	48	
509.41.32	50 x 32	100	50	26	100	16	35	60	



### Zubehör / Accessories / Accessoires / Yedekler



Unterlegplatte  
Shim  
Plaque entretoise  
Kater laması

99.44



Kunststoff - Kugelspritzdüse  
Plastic ball sprayer nozzle  
Buse d'injection spherique en plastique  
Su verme misketi

99.50



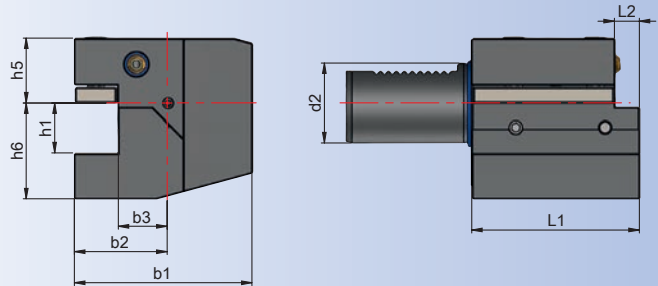


**Axial - Toolholder Form C2 left**

**Porte - outil Axial Forme C2 gauche**

**Eksenel kater tutucu C2 Formu sol**

Bestell-Nr. Order Nr. Référence Sipariş Nr.	Abmessung Size / Dimension Size / Cinsi d1 x h1	b1	b2	b3	L1	L2	h5	h6	Euro
169.42.12	16 x 12	43	24	13	44	5	20	22	
209.42.16	20 x 16	65	40	26	50	7	25	30	
259.42.16	25 x 16	58	33	19	55	7	25	30	
309.42.20	30 x 20	76	41	23	70	10	28	38	
409.42.25	40 x 25	90	47,5	25,5	85	12,5	32,5	48	
509.42.32	50 x 32	105	55	30,5	100	16	35	60	



**Zubehör / Accessories / Accessoires / Yedekler**

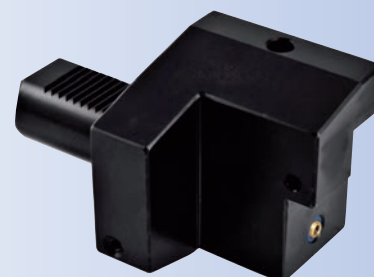
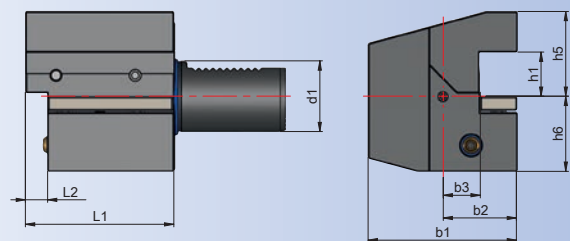
 9.44	Unterlegplatte Shim Plaque entretoise Kater laması	 9.50	Kunststoff - Kugelspritzdüse Plastic ball sprayer nozzle Buse d'injection spherique en plastique Su verme misketi
--	---	---	--

**Axial - Toolholder Form C3 Overhead right, short**

**Porte - outil Axial Forme C3 inversé droite, court**

**Eksenel kater tutucu C3 Formu ters sağ, kısa**

Bestell-Nr. Order Nr. Référence Sipariş Nr.	Abmessung Size / Dimension Size / Cinsi d1 x h1	b1	b2	b3	L1	L2	h5	h6	Euro
169.43.12	16 x 12	43	24	13	44	5	22	20	
209.43.16	20 x 16	52	27	13	50	7	30	25	
259.43.16	25 x 16	58	33	19	55	7	30	25	
309.43.20	30 x 20	70	35	17	70	10	38	35	
409.43.25	40 x 25	85	42,5	20	85	12,5	48	42,5	
509.43.32	50 x 32	100	50	26	100	16	60	50	



**Zubehör / Accessories / Accessoires / Yedekler**

 9.44	Unterlegplatte Shim Plaque entretoise Kater laması	 9.50	Kunststoff - Kugelspritzdüse Plastic ball sprayer nozzle Buse d'injection spherique en plastique Su verme misketi
--	---	---	--



## Axial - Werkzeughalter FormC4 Überkopf links, kurz

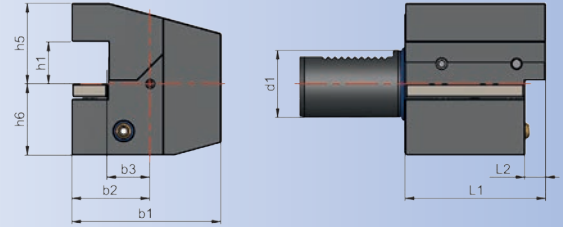
VDI 3425 C4

Axial - Toolholder Form C4 Overhead left, short

Porte - outil Axial Forme C4 inversé gauche, court

Eksenel kater tutucu C4 Formu kafaüstü sol, kısa

Bestell-Nr. Order Nr. Référence Sipariş Nr.	Abmessung Size / Dimension Size / Cinsi d1 x h1	b1	b2	b3	L1	L2	h5	h6	Euro
169.44.12	16 x 12	43	24	13	44	5	22	20	
209.44.16	20 x 16	65	40	26	50	7	30	25	
259.44.16	25 x 16	58	33	19	55	7	30	25	
309.44.20	30 x 20	76	41	23	70	10	38	35	
409.44.25	40 x 25	90	47,5	25,5	85	12,5	48	42,5	
509.44.32	50 x 32	105	50	30,5	100	16	60	50	



### Zubehör / Accessories / Accessoires / Yedekler



Unterlegplatte  
Shim  
Plaque entretoise  
Kater laması

9.44



Kunststoff - Kugelspritzdüse  
Plastic ball sprayer nozzle  
Buse d'injection spherique en plastique  
Su verme misketi

9.50

## Vierkant - Aufnahme, Form D1

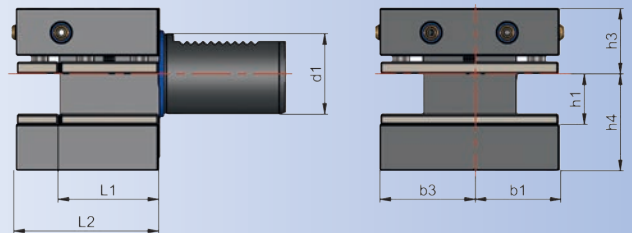
VDI 3425 D1

Squaretool holder, Form D1

Tige carre, Forme D1

Çok yönlü kater tutucu, D1 Formu

Bestell-Nr. Order Nr. Référence Sipariş Nr.	Abmessung Size / Dimension Size / Cinsi d1 x h1	b1	b3	L1	L2	h3	h4	Euro
259.55.16	25 x 16	33	33	34	48	25	30	
309.55.20	30 x 20	35	41	42	60	28	38	
409.55.25	40 x 25	42,5	47,5	50	72	32,5	48	
509.55.32	50 x 32	50	55	60	85	35	60	



## Vierkant - Aufnahme, Überkopf, Form D2

VDI 3425 D2

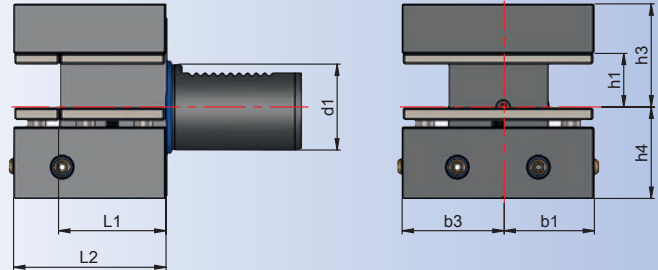


### Squaretool holder, inverted, Form D2

### Tige carre, al'envers, Forme D2

### Çok yönlü kater tutucu, D2 Formu

Bestell-Nr. Order Nr. Référence Sipariş Nr.	Abmessung Size / Dimension Size / Cinsi d1 x h1	b1	b3	L1	L2	h3	h4	Euro
259.56.16	25 x 16	33	33	34	48	30	25	
309.56.20	30 x 20	35	41	42	60	38	35	
409.56.25	40 x 25	42,5	47,5	50	72	48	42,5	
509.56.32	50 x 32	50	55	60	85	60	50	



## Bohrerhalter für Wendepplattenbohrer E1

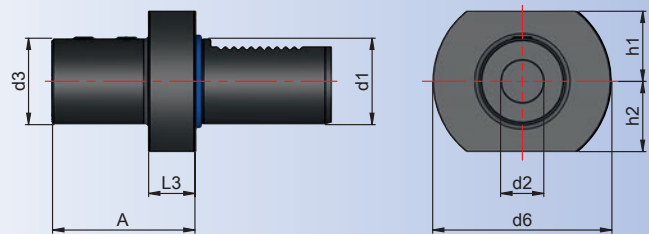
VDI 3425 E1

### Boring holder for drill with indexable insert form E1

### Porte foret pour foret à plaquettes réversible forme E1

### Takma uçlu U-diril tutucu Form E1

Bestell-Nr. Order Nr. Référence Sipariş Nr.	Abmessung Size / Dimension Size / Cinsi d1 x d2	d3	d6	h1	h2	A	L3	Euro
209.51.16.67	20 x 16	36	50	22	23	67	18	
209.51.20.67	20 x 20	40	50	22	23	67	18	
209.51.25.71	20 x 25	45	50	22	23	71	18	
259.51.16.67	25 x 16	36	58	25	25	67	18	
259.51.20.67	25 x 20	40	58	25	25	67	18	
259.51.25.71	25 x 25	45	58	25	25	71	18	



### Zubehör / Accessories / Accessoires / Yedekler



Reduzierbuchsen  
Reducing sleeve  
Douilles de reduction  
Redüksiyon

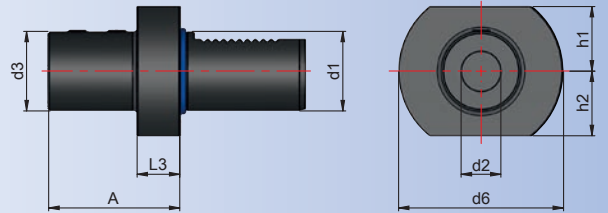


Spannschrauben  
Clamping screw  
Vis de serrage  
Sıkma civatası

VDI 3425  
(DIN 69880)

**Boring holder for drill with indexable insert form E1****Porte foret pour foret à plaquettes réversible forme E1****Takma uçlu U-diril tutucu Form E1**

Bestell-Nr. Order Nr. Référence Sipariş Nr.	Abmessung Size / Dimension Size / Cinsi d1 x d2	d3	d6	h1	h2	A	L3	Euro
309.51.16.64	30 x 16	36	68	28	30	64	22	
309.51.20.67	30 x 20	40	68	28	30	67	22	
309.51.25.71	30 x 25	45	68	28	30	71	22	
309.51.32.75	30 x 32	52	68	28	30	75	22	
309.51.40.95	30 x 40	60	68	28	30	95	22	
409.51.16.64	40 x 16	36	83	32,5	-	64	22	
409.51.20.67	40 x 20	40	83	32,5	-	67	22	
409.51.25.75	40 x 25	45	83	32,5	-	75	22	
409.51.32.75	40 x 32	52	83	32,5	-	75	22	
409.51.40.90	40 x 40	65	83	32,5	-	90	22	
509.51.16.66	50 x 16	36	98	35	-	66	30	
509.51.20.66	50 x 20	40	98	35	-	66	30	
509.51.25.80	50 x 25	45	98	35	-	80	30	
509.51.32.80	50 x 32	52	98	35	-	80	30	
509.51.40.90	50 x 40	65	98	35	-	90	30	
509.51.50.100	50 x 50	75	98	35	-	100	30	

**Zubehör / Accessories / Accessoires / Yedekler**

Reduzierbuchsen  
Reducing sleeve  
Douilles de reduction  
Redüksiyon

9.28



Spannschrauben  
Clamping screw  
Vis de serrage  
Sıkma civatası

9.39 - 9.40



## Boring bar holder Form E2

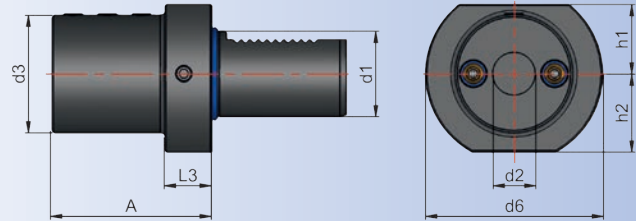
## Porte-outil pour barres d'alésage Forme E2

## Delik kater tutucu Form E2

Bestell-Nr. Order Nr. Référence Sipariş Nr.	Abmessung Size / Dimension Size / Cinsi d1 x d2	d6	d3	h1	h2	L3	A	Euro
169.52.06.44	16 x 06	40	32	18	18	13	44	
169.52.08.44	16 x 08	40	32	18	18	13	44	
169.52.10.44	16 x 10	40	32	18	18	13	44	
169.52.12.44	16 x 12	40	40	18	18	-	44	
169.52.16.44	16 x 16	40	40	18	18	-	44	

209.52.08.50	20 x 08	50	40	-	23	18	50	
209.52.10.50	20 x 10	50	40	-	23	18	50	
209.52.12.50	20 x 12	50	40	-	23	18	50	
209.52.16.50	20 x 16	50	40	-	23	18	50	
209.52.20.50	20 x 20	50	50	-	23	-	50	
209.52.25.60	20 x 25	50	50	-	23	-	60	

259.52.08.50	25 x 08	58	40	25	25	18	50	
259.52.10.50	25 x 10	58	40	25	25	18	50	
259.52.12.50	25 x 12	58	40	25	25	18	50	
259.52.16.50	25 x 16	58	40	25	25	18	50	
259.52.20.50	25 x 20	58	58	25	25	-	50	
259.52.25.60	25 x 25	58	58	25	25	-	60	



## Zubehör / Accessories / Accessoires / Yedekler



Reduzierbuchsen  
Reducing sleeve  
Douilles de reduction  
Redüksiyon



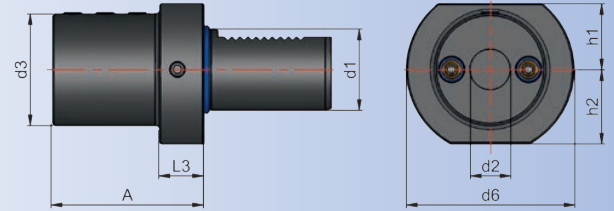
Spannschrauben  
Clamping screw  
Vis de serrage  
Sıkma civatası



Kunststoff - Kugelspritzdüse  
Plastic ball sprayer nozzle  
Buse d'injection spherique en plastique  
Su verme misketi

**Boring bar holder Form E2****Porte-outil pour barres d'alésage Forme E2****Delik kater tutucu Form E2**

Bestell-Nr. Order Nr. Référence Sipariş Nr.	Abmessung Size / Dimension Size / Cinsi d1 x d2	d6	d3	h1	h2	L3	A	Euro
309.52.08.60	30 x 08	68	55	28	30	22	60	
309.52.10.60	30 x 10	68	55	28	30	22	60	
309.52.12.60	30 x 12	68	55	28	30	22	60	
309.52.16.60	30 x 16	68	55	28	30	22	60	
309.52.20.60	30 x 20	68	55	28	30	22	60	
309.52.25.60	30 x 25	68	55	28	30	22	60	
309.52.32.75	30 x 32	68	68	28	30	22	75	
309.52.40.90	30 x 40	68	68	28	30	22	90	



409.52.08.75	40 x 08	83	55	32,5	-	22	75	
409.52.10.75	40 x 10	83	55	32,5	-	22	75	
409.52.12.75	40 x 12	83	55	32,5	-	22	75	
409.52.16.75	40 x 16	83	55	32,5	-	22	75	
409.52.20.75	40 x 20	83	55	32,5	-	22	75	
409.52.25.75	40 x 25	83	55	32,5	-	22	75	
409.52.32.75	40 x 32	83	83	32,5	-	-	75	
409.52.40.90	40 x 40	83	83	32,5	-	-	90	

509.52.12.90	50 x 12	98	68	35	-	30	90	
509.52.16.90	50 x 16	98	68	35	-	30	90	
509.52.20.90	50 x 20	98	68	35	-	30	90	
509.52.25.90	50 x 25	98	68	35	-	30	90	
509.52.32.90	50 x 32	98	68	35	-	30	90	
509.52.40.90	50 x 40	98	98	35	-	-	90	
509.52.50.100	50 x 50	98	98	35	-	-	100	

**Zubehör / Accessories / Accessoires / Yedekler**

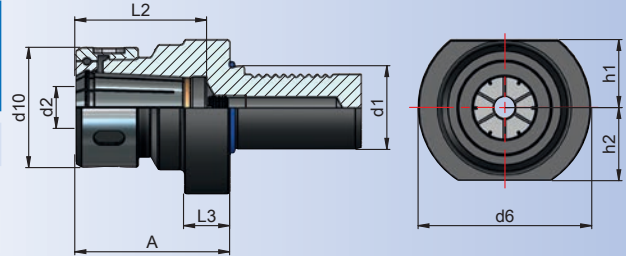


## Collet holder Form E3 for Collets DIN 6388

## Porte-outil Forme E3 pour pinces de serrage DIN 6388

## Pens başlığı E3 Formu Pens DIN 6388

Bestell-Nr. Order Nr. Référence Sipariş Nr.	Abmessung Size / Dimension Size / Cinsi d1 x d2	d6	d10	h1	h2	L2	L3	A	Euro
169.01.16.57	16 x (2 -16)	40	43	18	18	52	13	57	
209.01.16.57	20 x (2 -16)	50	43	23	23	52	18	57	
259.01.16.57	25 x (2 -16)	58	43	25	25	52	18	57	
309.01.16.57	30 x (2 -16)	68	43	28	30	52	22	57	
309.01.25.75	30 x (2 -25)	68	60	28	30	64	22	75	
409.01.16.55	40 x (2 -16)	83	43	32,5	-	52	22	55	
409.01.25.75	40 x (2 -25)	83	60	32,5	-	64	22	75	
409.01.32.90	40 X (4 -32)	83	72	32,5	-	81	22	90	
509.01.25.75	50 x (2 -25)	98	60	35	-	64	30	75	
509.01.32.90	50 x (4 -32)	98	72	35	-	81	30	90	



## Zubehör / Accessories / Accessoires / Yedekler



9.08 - 9.10

Spannzangen DIN 6388 B  
Collets DIN 6388 Form B  
Pinces de serrage DIN 6388, forme B  
Pens DIN 6388 B Formu



9.24 + 9.26

Spannmutter OZ DIN 6388  
Clamping nuts OZ DIN 6388  
Écrou de serrage OZ DIN 6388  
Pens kapağı OZ DIN 6388



9.46

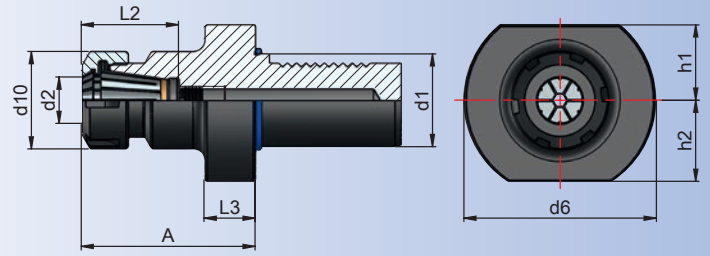
Hakenschlüssel DIN 1810 A  
Wrench DIN 1810 A  
Clé à ergot DIN 1810 A  
E tipi ay anahtar DIN 1810 A



Collet holder Form E4 for Collets DIN 6399 Type ER

Porte-outil Forme E4 pour pinces de serrage DIN 6499 Type ER

Pens başlığı E4 Formu Pens DIN 6499 ER Tipi



Bestell-Nr. Order Nr. Référence Sipariş Nr.	Abmessung Size / Dimension Size / Cinsi d1 x d2	d6	d10	h1	h2	L2	L3	A	Euro
169.02.10.50	16 x ER16 (1-10)	40	28	18	18	33	13	50	
169.02.16.48	16 x ER25 (2-16)	40	42	18	18	42	13	48	
209.02.10.55	20 x ER16 (1-10)	50	28	23	23	36	18	55	
209.02.16.57	20 x ER25 (2-16)	50	42	23	23	42	18	57	
209.02.20.58	20 x ER32 (2-20)	50	50	23	23	50	18	58	
259.02.16.57	25 x ER25 (2-16)	58	42	25	25	42	18	57	
309.02.16.57	30 x ER25 (2-16)	68	42	28	30	46	22	57	
309.02.20.75	30 x ER32 (2-20)	68	50	28	30	48	22	75	
309.02.26.75	30 x ER40 (3-26)	68	63	28	30	54	22	75	
409.02.16.75	40 x ER25 (2-16)	83	42	32,5	-	42	22	75	
409.02.20.75	40 X ER32 (2-20)	83	50	32,5	-	48	22	75	
409.02.26.75	40 X ER40 (3-26)	83	63	32,5	-	54	22	75	
509.02.26.75	50 x ER40 (3-26)	98	63	35	-	54	30	75	



ER 16

## INFO

Technische Daten	10.01
Technical Data	10.01
Données Techniques	10.01
Teknik Bilgi	10.01

## Zubehör / Accessories / Accessoires / Yedekler



Spannzangen System ER DIN 6499  
Collets System ER DIN 6499  
Pinces de serrage System ER DIN 6499  
Pens ER tipi DIN 6499



Spannmutter ER DIN 6499  
Clamping nuts ER DIN 6499  
Écrou de serrage ER DIN 6499  
Pens kapağı ER DIN 6499



Spannschlüssel für ER  
Wrench ER  
Clé de serrage ER  
ER tipi anahtar



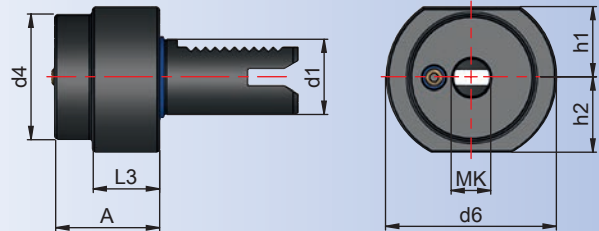


## Holder for morse taper Shanks Form F1

## Porte-foret pour outil à cône Morse Forme F1

## Mors Konik Tutucu Form F1

Bestell-Nr. Order Nr. Référence Sipariş Nr.	Abmessung Dimension Size / Cinsi d1 x MK	d4	d6	A	L3	h1	h2	Euro
169.07.01.32	16 x MK1	32	40	32	13	18	18	
209.07.01.23	20 x MK1	-	50	23	-	23	23	
209.07.02.90	20 x MK2	40	50	90	30	23	23	
259.07.01.23	25 x MK1	-	58	23	-	25	25	
259.07.02.27	25 x MK2	-	58	27	-	25	25	
309.07.01.27	30 x MK1	-	68	27	-	28	30	
309.07.02.27	30 x MK2	-	68	27	-	28	30	
309.07.03.66	30 x MK3	58	68	66	22	28	30	
409.07.01.36	40 x MK1	55	83	36	22	32,5	-	
409.07.02.36	40 x MK2	55	83	36	22	32,5	-	
409.07.03.36	40 x MK3	55	83	36	22	32,5	-	
409.07.04.80	40 x MK4	68	83	80	22	32,5	-	
509.07.02.36	50 x MK2	55	98	36	30	35	-	
509.07.03.36	50 x MK3	58	98	36	30	35	-	
509.07.04.50	50 x MK4	68	98	50	30	35	-	



## Zubehör / Accessories / Accessoires / Yedekler



Kunststoff - Kugelspritzdüse  
Plastic ball sprayer nozzle  
Buse d'injection sphérique en plastique  
Su verme misketi

9.50



## NC - Bohrfutter mit zentraler Kühlmittelzuführung

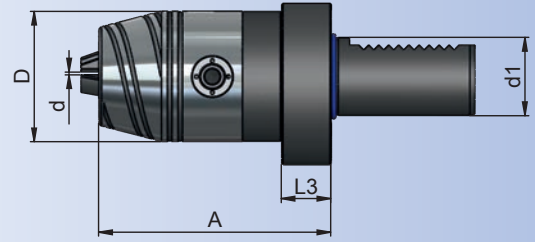
VDI 3425

### NC-Drill chucks with center coolant

### Mandrin de perçage CNC avec arrosage par to centre

### NC tipi mandren malafası, merkezden su vermeli

Bestell-Nr. Order Nr. Référence Sipariş Nr.	d1	Spannbereich Capacity Capacité Kapasite d	A	D	L3	Euro
209.15.08.68	20	0,5-8	68	36	18	
209.15.13.90	20	1-13	90	50	18	
259.15.13.89	25	1-13	89	50	18	
309.15.08.69	30	0,5-8	69	36	19	
309.15.13.90	30	1-13	90	50	19	
309.15.16.95	30	3-16	95	57	19	
409.15.13.90	40	1-13	90	50	20	
409.15.16.95	40	3-16	95	57	20	
509.15.13.100	50	1-13	100	50	30	
509.15.16.106	50	3-16	106	57	30	



Lieferumfang : Inkl. Spannschlüssel  
Included : Wrench  
Inclus : Clé de serrage  
Teslim Şekli : Anahtar ile birlikte

#### INFO

Technische Daten	10.06
Technical Data	10.06
Donées Techniques	10.06
Teknik Bilgi	10.06

#### Zubehör / Accessories / Accessoires / Yedekler



Ersatzteile  
Spare Parts  
Pièce de rechange  
Yedek parçalar



Spannschlüssel  
Wrench  
Clé de serrage  
Sıkma anahtar

## NC - Bohrfutter mit Kühlmittelzuführung über Kugelspritzdüsen

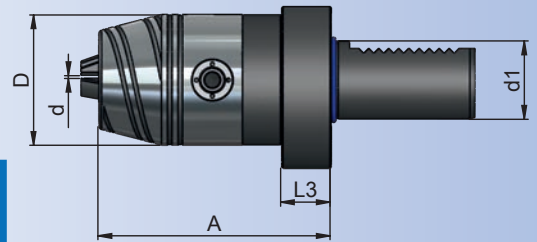
VDI 3425

### NC-Drill chucks with coolant supply via ball coolant nozzle

### Mandrin de perçage CNC avec arrosage par buses de picot

### NC tipi mandren malafası, alından soğutma suyu püskürtmeli

Bestell-Nr. Order Nr. Référence Sipariş Nr.	d1	Spannbereich Capacity Capacité Kapasite d	A	D	L3	Euro
309.15.13.90.K	30	1-13	90	57	20	
309.15.16.95.K	30	3-16	95	57	20	
409.15.13.90.K	40	1-13	90	57	20	
409.15.16.95.K	40	3-16	95	57	20	



#### INFO

Lieferumfang : Inkl. Spannschlüssel  
Included : Wrench  
Inclus : Clé de serrage  
Teslim Şekli : Anahtar ile birlikte

Technische Daten	10.06
Technical Data	10.06
Donées Techniques	10.06
Teknik Bilgi	10.06

#### Zubehör / Accessories / Accessoires / Yedekler



Ersatzteile  
Spare Parts  
Pièce de rechange  
Yedek parçalar



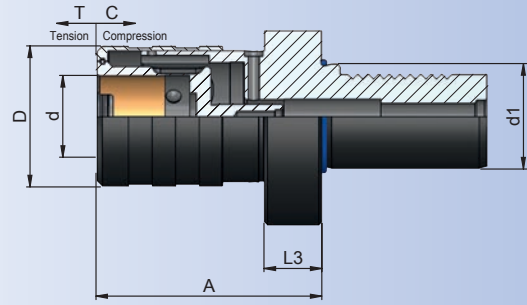
Spannschlüssel  
Wrench  
Clé de serrage  
Sıkma anahtar

Quick-change tapping chucks with length compensation

Appareil à tarauder avec compensation longitudinale

Kılavuz çekme başlığı Giriş ve çıkış kompanzeli

Bestell-Nr. Order Nr. Référence Sipariş Nr.	d1	Spannbereich Capacity Capacité Kapasite	A	D	d	L3	C	T	Euro
209.16.12.57	20	M2 / M14	57	36,5	19	16	7	7	
259.16.12.58	25	M2 / M14	58	36,5	19	18	7	7	
309.16.12.62	30	M2 / M14	62	36,5	19	22	7	7	
309.16.20.84	30	M5 / M24	84	53,5	31	22	12	12	
409.16.12.62	40	M2 / M14	62	36,5	19	22	7	7	
409.16.20.84	40	M5 / M24	84	53,5	31	22	12	12	
509.16.12.70	50	M2 / M14	70	36,5	19	30	7	7	
509.16.20.92	50	M5 / M24	92	53,5	31	30	12	12	
509.16.36.108	50	M14 / M36	108	78	48	30	17,5	17,5	



Zubehör / Accessories / Accessoires / Yedekler



Schnellwechseleinsätze  
Tapping collets  
Douilles de taraudage  
Kılavuz tutucu

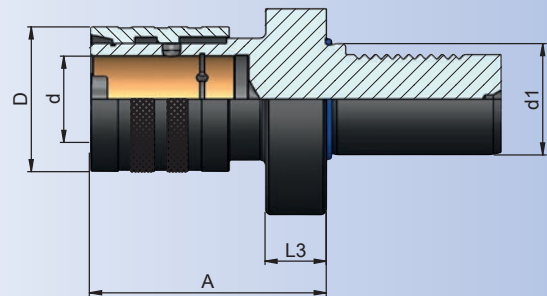
Ausführung : Mit Kugelführungsbuchse  
Version : With ball retainer  
Version : Comprenant douille de glissière à bille  
Teknik özelliği : Bilya Kafesli

Quick-change tapping chucks without length compensation

Appareil à tarauder sans compensation longitudinale

Kılavuz çekme başlığı sabit

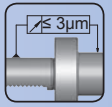
Bestell-Nr. Order Nr. Référence Sipariş Nr.	d1	Spannbereich Capacity Capacité Kapasite	A	D	d	L3	Euro
209.16.12.1.58	30	M2 / M14	58	38	19	16	
259.16.12.1.58	25	M2 / M14	58	38	19	18	
309.16.12.1.62	30	M2 / M14	62	38	19	22	
309.16.20.1.85	30	M5 / M24	85	52	31	22	
409.16.12.1.62	40	M2 / M14	62	38	19	22	
409.16.20.1.85	40	M5 / M24	85	52	31	22	
509.16.12.1.72	50	M2 / M14	72	38	19	30	
509.16.20.1.93	50	M5 / M24	93	52	31	30	
509.16.36.1.116	50	M14 / M36	116	78	48	30	



Zubehör / Accessories / Accessoires / Yedekler

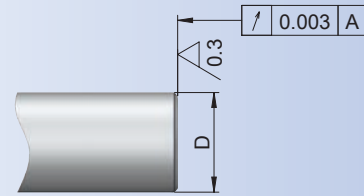
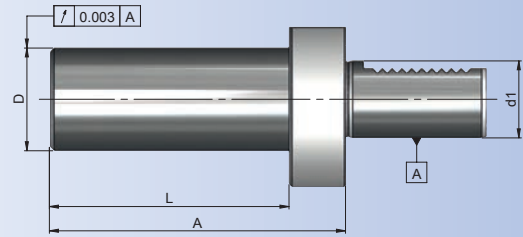


Schnellwechseleinsätze  
Tapping collets  
Douilles de taraudage  
Kılavuz tutucu

**Test arbors****Mandrins de contrôle****Kontrol mastarı**

Bestell-Nr. Order Nr. Référence Sipariş Nr.	d1	D	A	L	Euro
169.18.30.120	16	30	120	107	
209.18.40.150	20	40	150	132	
259.18.40.150	25	40	150	132	
309.18.40.200	30	40	200	178	
409.18.40.200	40	40	200	178	
509.18.40.200	50	40	200	170	

- Verwendung : Zur Abnahme von Werkzeugmaschinen gemäß ISO-Empfehlung R 230
- Application : For acceptance tests of machine tools in accordance with ISO-recommendation R 230
- Application : Pour la recette technique des machines conforme recommandation ISO R 230
- Açıklama : Tezgahları devreye alırken ISO Normu R 230 sisteminde uygunluğunu kontrol etmek için
- Lieferung : Im Holzkasten mit Prüfprotokoll
- Included : Wooden Box with certificate
- Inclus : Coffet en bois avec certificat
- Teslim Şekli : Sandığı ve Kontrol Sertifikasıyla birlikte

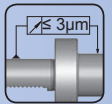
**Type G**

Kontrolldorne können auch als Version "stirnseitig geschliffen" optional bestellt werden (Beispiel Bestellnummer: 169.18.30.120.G)

Test arbors can be ordered in version "face grinded" optionally (Example order code no.: 169.18.30.120.G)

Mandrins de contrôle peuvent être commandés avec version "front aiguiser" comme option (exemple commande no.: 169.18.30.120.G)

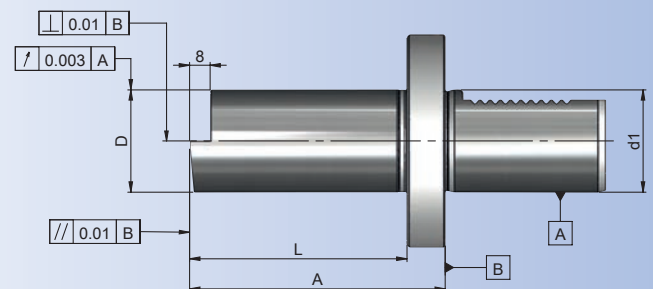
İsteğe bağlı "alı taşlanmış" sipariş edilebilir. (Örnek Sipariş Nr.: 169.18.30.120.G)

**Einrichtehalter****Setting-holder****Porte-outil de réglage****Fener mili pozisyon kontrol mastarı**

Bestell-Nr. Order Nr. Référence Sipariş Nr.	d1	D	A	L	Euro
<b>new</b> 409.19.40.100	40	40	100	85	

- Lieferung : Im Holzkasten mit Prüfprotokoll
- Included : Wooden Box with certificate
- Inclus : Coffet en bois avec certificat
- Teslim Şekli : Sandığı ve Kontrol Sertifikasıyla birlikte

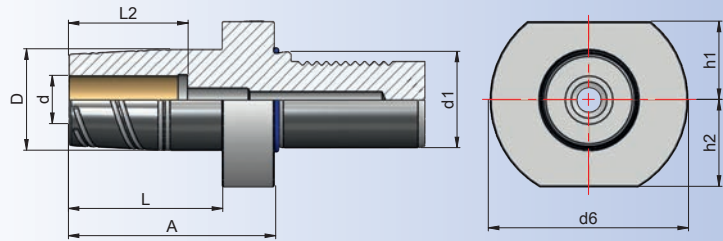
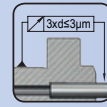
- Verwendung : Zur Abnahme von Werkzeugmaschinen gemäß ISO-Empfehlung R 230
- Application : For acceptance tests of machine tools in accordance with ISO-recommendation R 230
- Application : Pour la recette technique des machines conforme recommandation ISO R 230
- Açıklama : Tezgahları devreye alırken ISO Normu R 230 sisteminde uygunluğunu kontrol etmek için



## Hydraulic expansions chuck

## Mandrins expansibles hydrauliques

## Hidrolik Takım Tutucular



Bestell-Nr. Order Nr. Référence Sipariş Nr.	Abmessung Size/Dimension Size/Cinsi d1 x d	A	L	D	d6	h1	h2	Euro
<b>new</b> 259.65.12.55	25 x 12	55	37	32	58	25	25	
<b>new</b> 309.65.12.55	30 x 12	55	33	32	68	28	30	
<b>new</b> 309.65.20.64	30 x 20	64	42	42	68	28	30	
<b>new</b> 409.65.12.60	40 x 12	60	38	32	83	32,5	–	
<b>new</b> 409.65.20.64	40 x 20	64	42	42	83	32,5	–	
<b>new</b> 509.65.20.65	50 x 20	95	65	42	98	35	–	
<b>new</b> 509.65.32.65	50 x 32	95	65	63	98	35	–	



## INFO

Technische Daten	10.10
Technical Data	10.10
Donées Techniques	10.10
Teknik Bilgi	10.10

## Zubehör / Accessories / Accessoires / Yedekler



Reduzierungen  
Reducing arbor  
Douille de réduction  
Pens



Einstellschraube DIN 916  
Adjusting screw DIN 916  
Vis de réglage DIN 916  
Dayama civatası DIN 916



Spannschlüssel  
Wrench  
Clé de serrage  
Sıkma anahtarı



Büchsenzieher für Reduzierungen  
Sleeve remover for reducing arbor  
Clé étirage pour douilles  
Hidrolik Takım Pensi Çıkarma Anahtarı



## Schutzstopfen Z2 Kunststoff

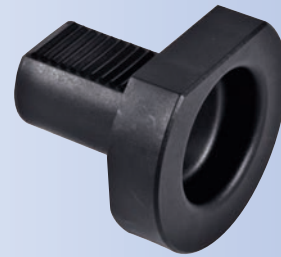
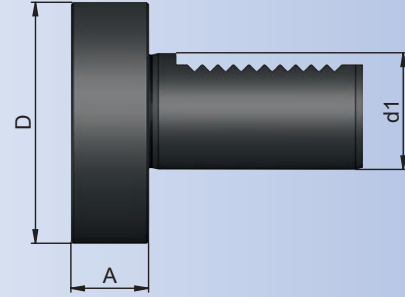
VDI 3425 Z2

Protective plug Z2, plastic

Bouchon de protection Z2, plastique

Plastik kör tapa, Z2

Bestell-Nr. Order Nr. Référence Sipariş Nr.	d1	A	D	Euro
169.28.13	16x13	13	40	
209.28.16	20x16	16	50	
259.28.16	25x16	16	58	
309.28.20	30x20	20	68	
409.28.20	40x20	20	83	
509.28.20	50x20	20	98	



## Schutzstopfen Z2 Stahl

VDI 3425 Z2

Protective plug Z2, steel

Bouchon de protection Z2, acier

Metal kör tapa, Z2

Bestell-Nr. Order Nr. Référence Sipariş Nr.	d1	A	D	Euro
169.29.13	16x13	13	40	
209.29.16	20x16	16	50	
259.29.16	25x16	16	58	
309.29.20	30x20	20	68	
409.29.20	40x20	20	83	
509.29.20	50x20	20	98	

