



EPS (ISO 26623-1) Werkzeugaufnahmen

Toolholders

Porte-outils

Takım Tutucular

INHALTSVERZEICHNIS / INDEX Seite / Page

Spannfutter für Spannzangen - Collet chucks Mandrin à pinces - Pens başlığı	4.02 - 4.03
Ausrichtbares Werkzeugspannfutter - Adjustable tool holder Tige de réglage - Hassas ayarlanabilir pens tutucu	4.03
Kraftspannfutter - Milling chuck Mandrin de fraisage - Bilyalı pens tutucu	4.04
Fräseraufnahmen - End mill holder Porte-fraises - Veldon tutucu	4.05 - 4.08
Zwischenhülsen - Morse taper adapter Douilles intermédiaires - Mors adaptörü	4.08
Kombi-Aufsteckfräserdorne - Combi shell mill holder Porte-fraises à double usage pour fraises - Kombine malafa	4.09
Quernut-Aufsteckdorne - Shell mill holder Porte-fraises à surfacer - Alın kamalı malafa	4.10
Fräsdorne Aufschraubfräser Milling cutter - Vidalı tip freze	4.11
Bohrerhalter - Boring bar holder Porte foret - U drill tutucu	4.12
NC Bohrfutter - NC drill chuck Mandrin de perçage - NC mandren malafası	4.12
Gewindeschneidfutter - Quick change tapping chuck Appareil à tarauder - Kılavuz çekme başlığı	4.13
Rohlinge - Blanks Barre d'alésage - Özel takım yapma amaçlı yarı mamul	4.14
Kontrolldorne - Test arbors Mandrin de contrôle - Kontrol mastarı	4.15
Einrichtehalter - Setting-holder Porte outil de réglage - Pozisyon kontrol mastarı	4.15
Schrumpffutter - Shrink chuck Mandrin de frettage - Isıtmalı takım tutucular	4.16 - 4.18
Hydro Dehnspannfutter - Hydraulic expansions chuck Mandrin expansibles hydrauliques - Hidrolik takım tutucular	4.19
Bohrerhalter E2 - Boring bar holder E2 Porte-outil E2 - Delik kater tutucu E2	4.20
Werkzeughalter - Toolholder Porte-outil - Kater tutucu	4.21 - 4.23



EPS
(ISO 26623-1)

Mit EROGLU erhalten Sie auch Nicht-Standard – in der gleichen Qualität!

With EROGLU you receive non-standard, too – within the same quality!

Avec EROGLU vous recevez aussi non-standard – avec la même qualité!

Özel ürün seçenekleri ile EROĞLU kalitesi hep sizinle...

. ES



Alle Artikel können aus rostfreiem Stahl gefertigt werden.

(Beispiel Bestellnummer: EP6.02.10.60.ES)

All products can be produced from stainless steel.

(Example order code no: EP6.02.10.60.ES)

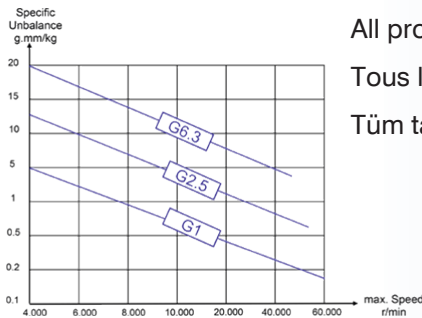
Tous les articles peuvent être fabriqués en acier inoxydable.

(Exemple commande no: EP6.02.10.60.ES)

Tüm takım tutucular paslanmaz malzemeden üretilebilir.

(Örnek sip. Nr. : EP6.02.10.60.ES)

. G2.5 x ...



Alle Artikel können mit dem angegebenen Maximalwert feingewuchtet werden.

All products can be produced in the specified maximum balance value.

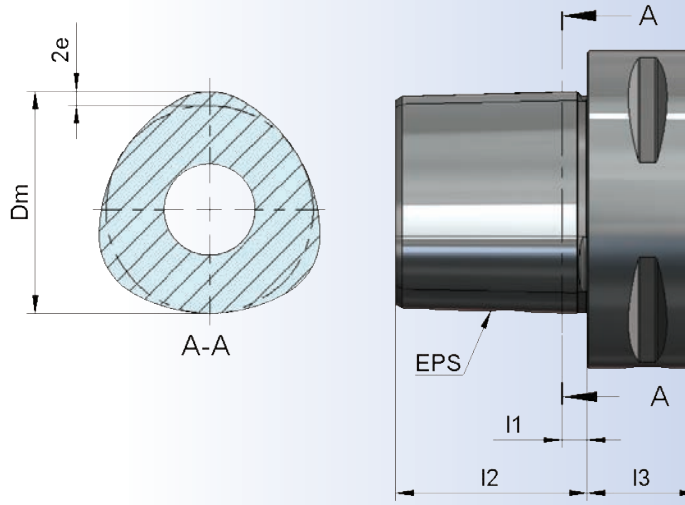
Tous les articles peuvent être spécifiés avec le maximum de précision équilibrée.

Tüm takım tutucular belirlenen max. balans değerlerinde üretilebilir.

Toolholders

Porte-outils

Konik Şaft Ölçüleri



EPS	Dm	e	l1	l2	l3 min
32	22	0,7	2,5	19	15
40	28	0,9	2,5	24	20
50	35	1,12	3	30	20
63	44	1,4	3	38	22
80	55	2	3	48	30
100	72	2,8	3	60	36

Werkstoff : Legierter Einsatzstahl mit einer Zugfestigkeit im Kern von mindestens 950 N/mm²

Ausführung : Einsatzgehärtet HRC 58 ± 2 Härtetiefe 0,6 mm + 0,2 mm, brüniert

Genauigkeit : Polygonform und Kegelwinkel nach ISO 26623-1
Oberflächenrauigkeit des Kegels Ra 0,3

Material : Case hardened steel, tensile strength in the core min. 950 N/mm²

Execution : Casehardened HRC 58 ± 2 Depth of case 0,6 mm + 0,2 mm, black-finish

Accuracy : Polygon form and cone angle according to ISO 26623-1
Surface roughness of cone max. Ra 0,3

Matière : Châssis d'allié en acier de cémentation. Résistance à la traction dans le noyau de min 950 N/mm²

Exécution : Cémenté HRC 58 ± 2 Epaisseur de cémentation 0,6 mm + 0,2 mm, bruni

Précision : Formé de polygone et qualité de finition pour l'angle du cône suivant ISO 26623-1
Rugosité en surface du cône Ra 0,3

Malzeme : Alaşımlı semente çeliği çekme mukavemeti min. 950 N/mm²

Teknik özelliği: Sertlik HRC 58 ± 2 sertlik derinliği 0,6 mm + 0,2 mm, karartılmış

Hassasiyeti : Konik açı tolerans kalitesi ISO 26623-1 normuna göre
Konik yüzey kalitesi Ra 0,3



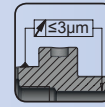
Spannfutter für Spannzangen DIN 6499 ER

EPS

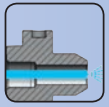
Collet chucks for Collets DIN 6499 ER

Mandrin à pinces DIN 6499 ER

Pens başlığı Pens DIN 6499 ER tipi

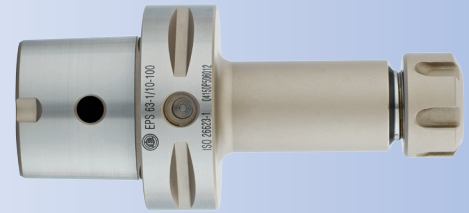
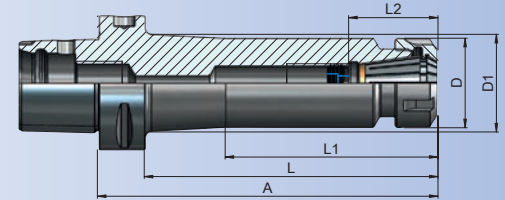


STANDARD
G 6.3
20.000
min⁻¹



SPECIAL
max.
G 2.5
50.000
min⁻¹

Bestell-Nr. Order Nr. Référence Sipariş Nr.	EPS	Spannbereich Capacity Capacité Kapasite	A	L	L1	L2	D	D1	Euro
EP3.02.10.45	EPS32	ER16 (1-10)	45	30	-	33	28	-	
EP4.02.10.70	EPS40	ER16 (1-10)	70	50	-	33	28	-	
EP4.02.16.52	EPS40	ER25 (2-16)	52	32	-	41	42	-	
EP4.02.20.54	EPS40	ER32 (2-20)	54	34	-	47	50	-	
EP5.02.10.55	EPS50	ER16 (1-10)	55	35	-	33	28	-	
EP5.02.10.100	EPS50	ER16 (1-10)	100	80	-	33	28	-	
EP5.02.16.55	EPS50	ER25 (2-16)	55	35	-	42	42	-	
EP5.02.16.100	EPS50	ER25 (2-16)	100	80	-	42	42	-	
EP5.02.20.77	EPS50	ER32 (2-20)	77	57	-	48	50	-	
EP5.02.20.100	EPS50	ER32 (2-20)	100	80	-	48	50	-	
EP6.02.10.60	EPS63	ER16 (1-10)	60	38	-	33	28	-	
EP6.02.10.100	EPS63	ER16 (1-10)	100	78	-	33	28	-	
new EP6.02.10.130	EPS63	ER16 (1-10)	130	108	-	33	28	-	
EP6.02.16.60	EPS63	ER25 (2-16)	60	38	-	42	42	-	
EP6.02.16.100	EPS63	ER25 (2-16)	100	78	-	42	42	-	
EP6.02.16.130	EPS63	ER25 (2-16)	130	108	-	42	42	-	
EP6.02.16.160	EPS63	ER25 (2-16)	160	138	100	42	42	46	
EP6.02.20.60	EPS63	ER32 (2-20)	60	38	-	48	50	-	
EP6.02.20.100	EPS63	ER32 (2-20)	100	78	-	48	50	-	
EP6.02.20.130	EPS63	ER32 (2-20)	130	108	-	48	50	-	
new EP6.02.20.160	EPS63	ER32 (2-20)	160	138	101	63	53	-	
EP6.02.26.65	EPS63	ER40 (3-26)	65	43	-	54	63	-	
EP6.02.26.100	EPS63	ER40 (3-26)	100	78	-	54	63	-	
EP6.02.26.130	EPS63	ER40 (3-26)	130	108	-	54	63	-	
EP8.02.20.70	EPS80	ER32 (2-20)	70	40	-	48	50	-	
EP8.02.20.160	EPS80	ER32 (2-20)	160	130	-	48	50	-	
EP8.02.26.70	EPS80	ER40 (3-26)	70	40	-	54	63	-	
EP8.02.26.160	EPS80	ER40 (3-26)	160	130	-	54	63	-	



ER 16

INFO

Technische Daten	10.01
Technical Data	10.01
Donées Techniques	10.01
Teknik Bilgi	10.01

Zubehör / Accessories / Accessoires / Yedekler



Spannzangen System ER DIN 6499
Collets System ER DIN 6499
Pinces de serrage System ER DIN 6499
Pens ER tipi DIN 6499



Spannmutter ER DIN 6499
Clamping nuts ER DIN 6499
Écrou de serrage ER DIN 6499
Pens kapağı ER DIN 6499



Spannschlüssel für ER
Wrench ER
Clé de serrage ER
ER tipi anahtar

Spannfutter für Spannzangen DIN 6499 ER

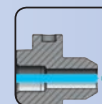
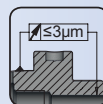
EPS



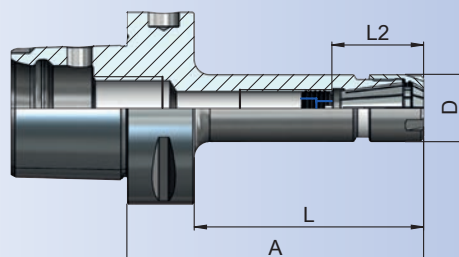
Collet chucks for Collets DIN 6499 ER

Mandrin à pinces DIN 6499 ER

Pens başlığı Pens DIN 6499 ER tipi



Bestell-Nr. Order Nr. Référence Sipariş Nr.	EPS	Spannbereich Capacity Capacité Kapasite	A	D	L	L2	Euro
new EP5.02.10.100.M	EPS50	ER16 (1-10)	100	22	80	33	
new EP6.02.10.100.M	EPS63	ER16 (1-10)	100	22	78	33	
new EP6.02.10.130.M	EPS63	ER16 (1-10)	130	22	108	33	



Zubehör / Accessories / Accessoires / Yedekler



Spannzangen System ER DIN 6499
Collets System ER DIN 6499
Pinces de serrage System ER DIN 6499
Pens ER tipi DIN 6499



Spannmutter Mini
Nut Mini
Écrou mini
Mini kapak



Spannchlüssel
Wrench
Clé de serrage
ER tipi anahtar

INFO

Technische Daten	10.01
Technical Data	10.01
Donées Techniques	10.01
Teknik Bilgi	10.01

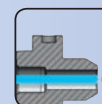
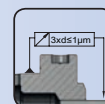
Ausrichtbares Werkzeugspannfutter

EPS

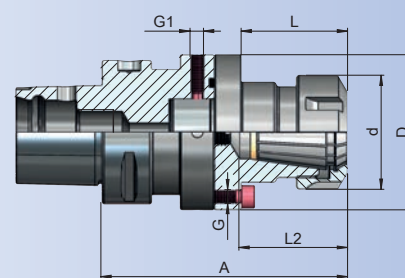
Adjustable tool holder

Tige de réglage

Hassas ayarlanabilir pens başlıkları



Bestell-Nr. Order Nr. Référence Sipariş Nr.	EPS	Spannbereich Capacity Capacité Kapasite EPS	d	A	D	L	L2	G	G1	Euro
new EP5.02.20.117.ARF-P	EPS50	ER32 (2-20)	50	117	68	47	48	M6	M6	
EP6.02.20.117.ARF-P	EPS63	ER32 (2-20)	50	117	68	47	48	M6	M6	



INFO

Technische Daten	10.04
Technical Data	10.04
Donées Techniques	10.04
Teknik Bilgi	10.04



Zubehör / Accessories / Accessoires / Yedekler



Spannzangen System ER DIN 6499
Collets System ER DIN 6499
Pinces de serrage System ER DIN 6499
Pens ER tipi DIN 6499



Spannmutter ER DIN 6499
Clamping nuts ER DIN 6499
Écrou de serrage ER DIN 6499
Pens kapağı ER DIN 6499



Spannchlüssel für ER
Wrench ER
Clé de serrage ER
ER tipi anahtar



Anzugschraube DIN 912
Bolt DIN 912
Trette DIN 912
Civata DIN 912



Einstellschraube DIN 915
Adjusting screw DIN 915
Vis de réglage DIN 915
Ayar civatası DIN 915



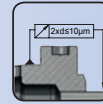
Präzisionskraftspannfutter

EPS

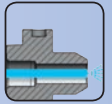
Precision milling chuck

Mandrin de fraisage de précision

Bilyalı Pens Tutucu



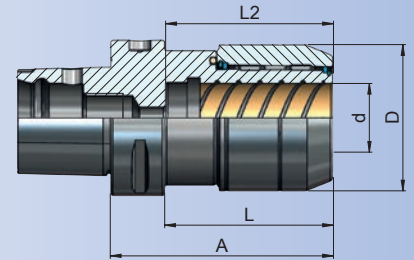
G 6.3
15.000
min⁻¹



Bestell-Nr. Order Nr. Référence Sipariş Nr.	EPS	Spannbereich Capacity Capacité Kapasite	d	A	L	D	L2	Euro
new EP5.03.20.100.N	EPS50	EKS 20 (6-20)	20	100	80	48	80	
new EP5.03.32.110.N	EPS50	EKS 32 (6-32)	32	110	-	68	80	
new EP6.03.20.100.N	EPS63	EKS 20 (6-20)	20	100	78	48	80	
new EP6.03.32.110.N	EPS63	EKS 32 (6-32)	32	110	88	68	80	
new EP8.03.20.100.N	EPS80	EKS 20 (6-20)	20	100	70	48	70	
new EP8.03.32.110.N	EPS80	EKS 32 (6-32)	32	110	80	68	80	

INFO

Technische Daten	10.02
Technical Data	10.02
Donées Techniques	10.02
Teknik Bilgi	10.02



Zubehör / Accessories / Accessoires / Yedekler



Spannzangen
Collets
Pinces de serrage
Pens



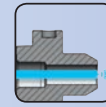
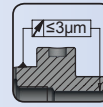
EKS Rollenschlüssel für Spannmutter
EKS Roller Bearing Wrenches
EKS Cles à rouleaux
EKS Bilyalı Kapak Sıkma Anahtarı



End mill holder for weldon type end mills

Porte-fraises pour queues cylindriques Weldon

Weldon tutucu Silindirik şaftlı



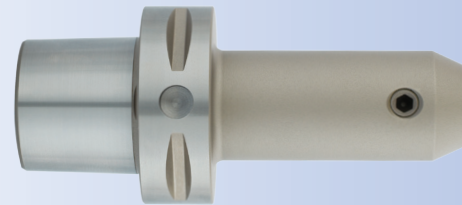
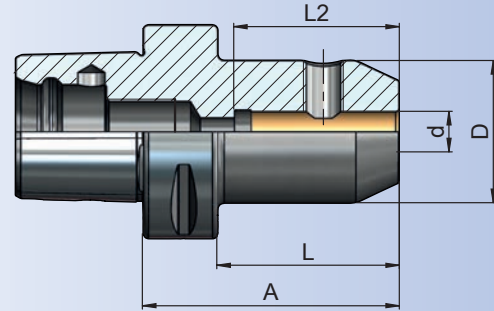
Bestell-Nr. Order Nr. Référence Sipariş Nr.	EPS	d	A	L	D	L2	Euro
--	-----	---	---	---	---	----	------

EP3.04.06.46	EPS32	6	46	31	25	30	
EP3.04.08.46	EPS32	8	46	31	28	32	
EP3.04.10.50	EPS32	10	50	35	35	36	
EP3.04.12.55	EPS32	12	55	40	42	49	

EP4.04.06.50	EPS40	6	50	30	25	30	
EP4.04.08.50	EPS40	8	50	30	28	32	
EP4.04.10.51	EPS40	10	51	31	35	36	
EP4.04.12.56	EPS40	12	56	36	42	45	
EP4.04.14.55	EPS40	14	55	35	44	51	
EP4.04.16.55	EPS40	16	55	35	48	51	

EP5.04.06.50	EPS50	6	50	30	25	30	
EP5.04.08.50	EPS50	8	50	30	28	32	
EP5.04.10.55	EPS50	10	55	35	35	42	
EP5.04.12.60	EPS50	12	60	40	42	44	
EP5.04.14.60	EPS50	14	60	40	44	44	
EP5.04.16.60	EPS50	16	60	40	48	51	
EP5.04.18.60	EPS50	18	60	40	50	53	
EP5.04.20.60	EPS50	20	60	40	52	53	
EP5.04.25.80	EPS50	25	80	60	63	64	

EP6.04.06.55	EPS63	6	55	33	25	30	
EP6.04.06.100	EPS63	6	100	78	25	30	
EP6.04.08.55	EPS63	8	55	33	28	32	
EP6.04.08.100	EPS63	8	100	78	28	32	
EP6.04.10.60	EPS63	10	60	38	35	36	
EP6.04.10.100	EPS63	10	100	78	35	36	
EP6.04.12.60	EPS63	12	60	38	42	44	
EP6.04.12.100	EPS63	12	100	78	42	44	



Type KKB

Kühlkanalbohrungen können als Option bestellt werden.

(Beispiel Bestellnummer: EP3.04.10.50.KKB)

Coolant channels borings can be ordered as option.

(Example order code no.: EP3.04.10.50.KKB)

Conduits pour arrosage peuvent être commandés comme l'option (exemple commande no.: EP3.04.10.50.KKB)

İsteğe bağlı alından su vermeli sipariş edilebilir. (Örnek Sipariş Nr.: EP3.04.10.50.KKB)

Hinweis : Bohrungstoleranz H4
Application : Boring tolerance H4
Indication : Tolérance d'alésage H4
Açıklama : İç çap toleransı H4

Lieferumfang : Inkl. Spannschraube
Included : Clamping screw
Inclus : Vis de serrage
Teslim Şekli : Sıkma civatası ile birlikte

Zubehör / Accessories / Accessoires / Yedekler



Spannschrauben DIN 1835 B
Clamping screw DIN 1835 B
Vis de serrage DIN 1835 B
Sıkma civatası DIN 1835 B

INFO

Technische Daten 10.05
Technical Data 10.05
Donées Techniques 10.05
Teknik Bilgi 10.05



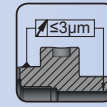
Fräseraufnahmen für Zylinderschäfte

EPS

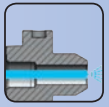
End mill holder for weldon type end mills

Porte-fraises pour queues cylindriques Weldon

Veldon tutucu Silindirik şaftlı

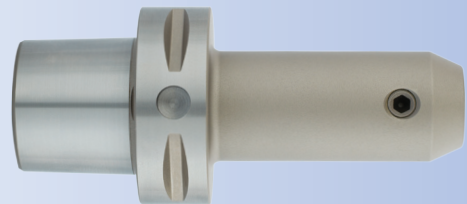
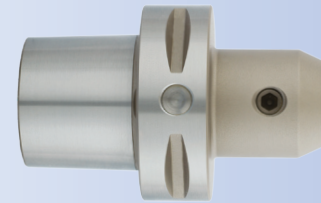
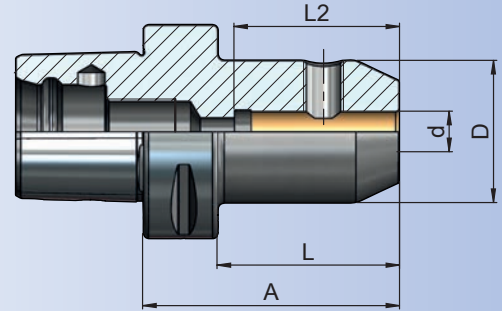


STANDARD
G 6.3
20.000
min⁻¹



SPECIAL
max.
G 2.5
40.000
min⁻¹

Bestell-Nr. Order Nr. Référence Sipariş Nr.	EPS	d	A	L	D	L2	Euro
EP6.04.14.60	EPS63	14	60	38	44	44	
EP6.04.14.100	EPS63	14	100	78	44	44	
EP6.04.16.65	EPS63	16	65	43	48	47	
EP6.04.16.100	EPS63	16	100	78	48	47	
EP6.04.18.65	EPS63	18	65	43	50	54	
EP6.04.18.100	EPS63	18	100	78	50	54	
EP6.04.20.65	EPS63	20	65	43	52	56	
EP6.04.20.100	EPS63	20	100	78	52	56	
EP6.04.25.80	EPS63	25	80	58	63	64	
EP6.04.25.100	EPS63	25	100	78	63	64	
EP6.04.32.90	EPS63	32	90	68	72	68	
EP6.04.32.100	EPS63	32	100	78	72	68	
EP6.04.40.100	EPS63	40	100	78	80	78	
EP8.04.06.70	EPS80	6	70	40	25	30	
EP8.04.08.70	EPS80	8	70	40	28	32	
EP8.04.10.70	EPS80	10	70	40	35	36	
EP8.04.12.70	EPS80	12	70	40	42	44	
EP8.04.14.70	EPS80	14	70	40	44	44	
EP8.04.16.70	EPS80	16	70	40	48	47	
EP8.04.18.70	EPS80	18	70	40	50	47	
EP8.04.20.70	EPS80	20	70	40	52	56	
EP8.04.25.80	EPS80	25	80	50	63	64	
EP8.04.32.80	EPS80	32	80	50	72	68	
EP8.04.40.110	EPS80	40	110	80	80	78	
EP8.04.50.120	EPS80	50	120	90	100	85	



Type KKB

Kühlkanalbohrungen können als Option bestellt werden.

(Beispiel Bestellnummer: EP6.04.14.60.KKB)

Coolant channels bores can be ordered as option.

(Example order code no.: EP6.04.14.60.KKB)

Conduits pour arrosage peuvent être commandés comme l'option
(exemple commande no.: EP6.04.14.60.KKB)

İsteğe bağlı alından su vermeli sipariş edilebilir.
(Örnek Sipariş Nr.: EP6.04.14.60.KKB)

Zubehör / Accessories / Accessoires / Yedekler



Spannschrauben DIN 1835 B
Clamping screw DIN 1835 B
Wis de serrage DIN 1835 B
Sıkma civatası DIN 1835 B

4.06

INFO

Technische Daten 10.05
Technical Data 10.05
Donées Techniques 10.05
Teknik Bilgi 10.05

Hinweis : Bohrungstoleranz H4
Application : Boring tolerance H4
Indication : Tolérance d'alésage H4
Açıklama : İç çap toleransı H4

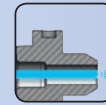
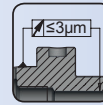
Lieferumfang : Inkl. Spannschraube
Included : Clamping screw
Inclus : Vis de serrage
Teslim Şekli : Sıkma civatası ile birlikte



End mill holder for weldon type end mills

Porte-fraises whistle notch pour queues cylindriques

Veldon tutucu Silindirik şaftlı



Bestell-Nr. Order Nr. Référence Sipariş Nr.	EPS	d	A	L	D	L2	Euro
--	-----	---	---	---	---	----	------

EP3.05.06.70	EPS32	6	70	55	25	36	
EP3.05.08.70	EPS32	8	70	55	28	38	
EP3.05.10.70	EPS32	10	70	55	35	42	
EP3.05.12.75	EPS32	12	75	60	42	50	

EP4.05.06.70	EPS40	6	70	50	25	36	
EP4.05.08.70	EPS40	8	70	50	28	38	
EP4.05.10.70	EPS40	10	70	50	35	42	
EP4.05.12.75	EPS40	12	75	55	42	51	
EP4.05.14.75	EPS40	14	75	55	44	51	

EP5.05.06.70	EPS50	6	70	50	25	36	
EP5.05.08.70	EPS50	8	70	50	28	38	
EP5.05.10.70	EPS50	10	70	50	35	42	
EP5.05.12.75	EPS50	12	75	55	42	49	
EP5.05.14.75	EPS50	14	75	55	44	51	
EP5.05.16.80	EPS50	16	80	60	48	50	
EP5.05.18.80	EPS50	18	80	60	50	54	
EP5.05.20.85	EPS50	20	85	65	52	56	

EP6.05.06.75	EPS63	6	75	53	25	36	
EP6.05.08.75	EPS63	8	75	53	28	38	
EP6.05.10.75	EPS63	10	75	53	35	42	
EP6.05.12.80	EPS63	12	80	58	42	51	
EP6.05.14.80	EPS63	14	80	58	44	51	
EP6.05.16.80	EPS63	16	80	58	48	54	
EP6.05.18.80	EPS63	18	80	58	50	54	
EP6.05.20.85	EPS63	20	85	63	52	56	
EP6.05.25.90	EPS63	25	90	68	63	64	
EP6.05.32.95	EPS63	32	95	73	72	68	

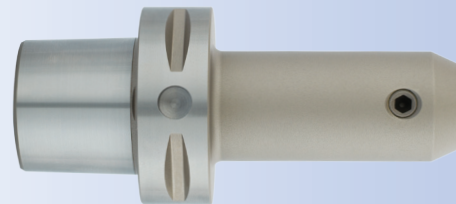
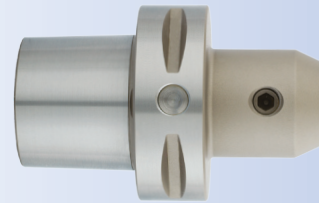
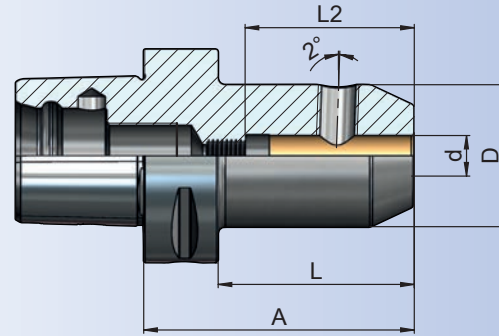
Zubehör / Accessories / Accessoires / Yedekler



Spannschrauben DIN 1835 B
Clamping screw DIN 1835 B
Vis de serrage DIN 1835 B
Sıkma civatası DIN 1835 B



Einstellschraube DIN 916
Adjusting screw DIN 916
Vis de réglage DIN 916
Dayama civatası DIN 916



Hinweis : Bohrungstoleranz H4
Application : Boring tolerance H4
Indication : Tolérance d'alésage H4
Açıklama : İç çap toleransı H4

Lieferumfang : Inkl. Spannschraube
Included : Clamping screw
Inclus : Vis de serrage
Teslim Şekli : Sıkma civatası ile birlikte

INFO

Technische Daten	10.05
Technical Data	10.05
Donées Techniques	10.05
Teknik Bilgi	10.05



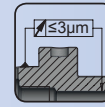
Fräseraufnahmen Whistle Notch für Zylinderschäfte

EPS

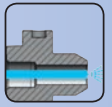
End mill holder for weldon type end mills

Porte-fraises whistle notch pour queues cylindriques

Veldon tutucu Silindirik şaftlı



STANDARD
G 6.3
15.000
min⁻¹



SPECIAL
max.
G 2.5
40.000
min⁻¹

Bestell-Nr. Order Nr. Référence Sipariş Nr.	EPS	d	A	L	D	L2	Euro
EP8.05.06.65	EPS80	6	65	35	25	36	
EP8.05.08.65	EPS80	8	65	35	28	38	
EP8.05.10.65	EPS80	10	65	35	35	43	
EP8.05.12.70	EPS80	12	70	40	42	51	
EP8.05.14.70	EPS80	14	70	40	44	51	
EP8.05.16.75	EPS80	16	75	45	48	54	
EP8.05.18.75	EPS80	18	75	45	50	54	
EP8.05.20.80	EPS80	20	80	50	52	56	
EP8.05.25.90	EPS80	25	90	60	63	64	
EP8.05.32.95	EPS80	32	95	65	72	68	

Hinweis : Bohrungstoleranz H4

Application : Boring tolerance H4

Indication : Tolérance d'alésage H4

Açıklama : İç çap toleransı H4

Lieferumfang : Inkl. Spannschraube

Included : Clamping screw

Inclus : Vis de serrage

Teslim Şekli : Sıkma civatası ile birlikte

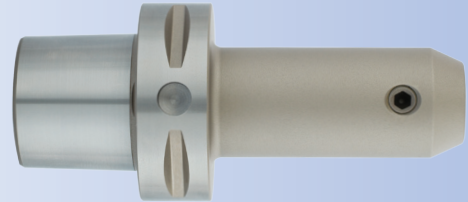
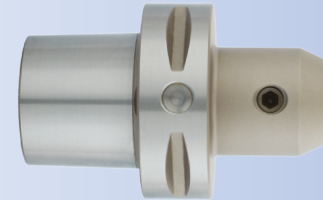
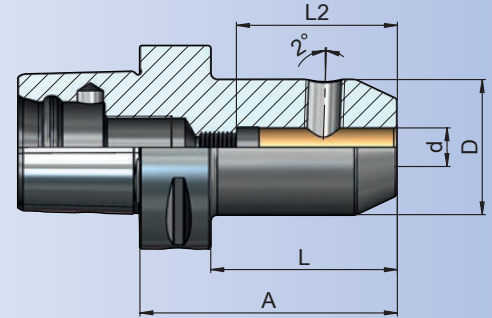
Zubehör / Accessories / Accessoires / Yedekler



Spannschrauben DIN 1835 B
Clamping screw DIN 1835 B
Vis de serrage DIN 1835 B
Sıkma civatası DIN 1835 B



Einstellschraube DIN 916
Adjusting screw DIN 916
Vis de réglage DIN 916
Dayama civatası DIN 916



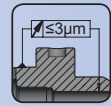
Morsekegel-Aufnahmen mit Austreibblappen

EPS

Morse taper adaptor

Douilles intermédiaires pour outils à cône Morse

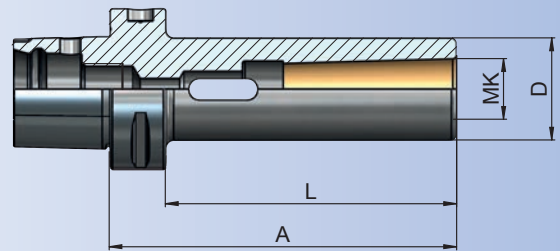
Mors adaptörü



STANDARD
G 6.3
15.000
min⁻¹

SPECIAL
max.
G 2.5
40.000
min⁻¹

Bestell-Nr. Order Nr. Référence Sipariş Nr.	EPS	MK	A	L	D	Euro
EP6.07.02.110	EPS63	2	110	88	32	
EP6.07.03.130	EPS63	3	130	108	40	
EP6.07.04.155	EPS63	4	155	128	48	

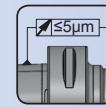




Combi shell mill holder

Porte-fraises á double usage pour fraises á entraînement par clavette ou tenon

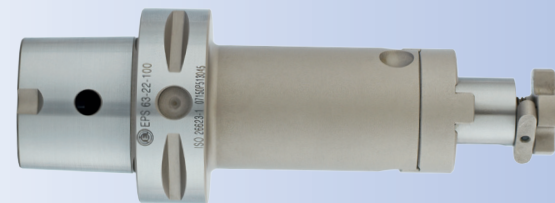
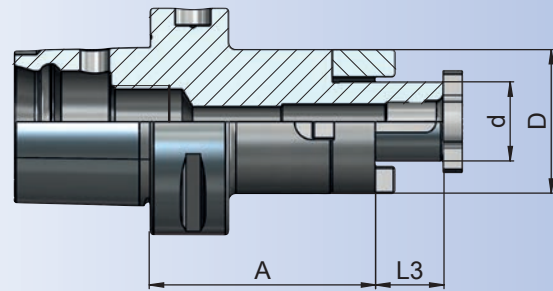
Kombine Malafa



STANDARD
G 6.3
15.000
min⁻¹

SPECIAL
max.
G 2.5
40.000
min⁻¹

Bestell-Nr. Order Nr. Référence Sipariş Nr.	EPS	d	A	L3	D	Euro
EP3.10.16.45	EPS32	16	45	17	32	
EP4.10.16.45	EPS40	16	45	17	32	
EP4.10.22.50	EPS40	22	50	19	40	
EP5.10.16.45	EPS50	16	45	17	32	
EP5.10.16.70	EPS50	16	70	17	32	
EP5.10.22.45	EPS50	22	45	19	40	
EP5.10.22.70	EPS50	22	70	19	40	
EP5.10.27.55	EPS50	27	55	21	48	
EP5.10.32.55	EPS50	32	55	24	58	
EP6.10.16.50	EPS63	16	50	17	32	
new EP6.10.16.100	EPS63	16	100	17	32	
EP6.10.22.55	EPS63	22	55	19	40	
new EP6.10.22.100	EPS63	22	100	19	40	
EP6.10.27.55	EPS63	27	55	21	48	
new EP6.10.27.100	EPS63	27	100	21	48	
EP6.10.32.55	EPS63	32	55	24	58	
EP6.10.40.60	EPS63	40	60	27	70	
EP8.10.16.60	EPS80	16	60	17	32	
EP8.10.22.60	EPS80	22	60	19	40	
EP8.10.27.65	EPS80	27	65	21	48	
EP8.10.32.65	EPS80	32	65	24	58	
EP8.10.40.70	EPS80	40	70	27	70	
EP10.10.40.75	EPS100	40	75	27	70	



Zubehör / Accessories / Accessoires / Yedekler



Mitnehmerringe DIN 6366
Clutch drive rings to DIN 6366
Bague d'entraînement DIN 6366
Tırnaklı pul DIN 6366



Fräseranzugsschrauben DIN 6367
Drawn in bolt DIN 6367
Vis de serrage DIN 6367
Alın sıkma civatası DIN 6367



Paßfeder
Drive key
Ressort de passage
Kama



Spannschlüssel DIN 6368 für Aufsteckdorne
Wrench DIN 6368
Clé de serrage DIN 6368
Alın civatası sıkma anahtarı DIN 6368



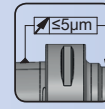
Quernut-Aufsteckdorne mit Innenkühlung

EPS

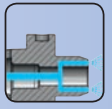
Shell mill holder for cutters with through coolant

Porte-fraises à surfacer avec refroidissement intérieur

Alın kamalı malafa-içten soğutmalı

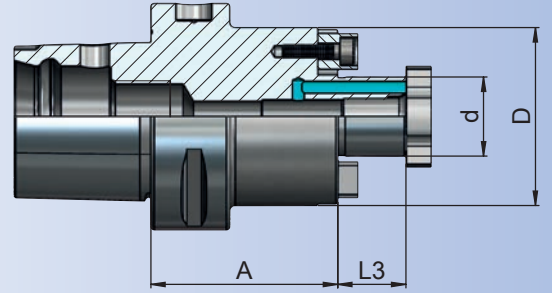


STANDARD
G 6.3
15.000
min⁻¹



SPECIAL
max.
G 2.5
40.000
min⁻¹

Bestell-Nr. Order Nr. Référence Sipariş Nr.	EPS	d	A	L3	D	Euro
EP3.11.16.30	EPS32	16	30	17	38	
EP4.11.16.35	EPS40	16	35	17	38	
EP4.11.22.40	EPS40	22	40	19	48	
EP5.11.16.35	EPS50	16	35	17	38	
new EP5.11.16.70	EPS50	16	70	17	38	
EP5.11.22.40	EPS50	22	40	19	48	
new EP5.11.22.70	EPS50	22	70	19	48	
EP5.11.27.40	EPS50	27	40	21	58	
EP6.11.16.35	EPS63	16	35	17	38	
new EP6.11.16.100	EPS63	16	100	17	38	
EP6.11.22.40	EPS63	22	40	19	48	
new EP6.11.22.100	EPS63	22	100	19	48	
EP6.11.27.40	EPS63	27	40	21	58	
new EP6.11.27.100	EPS63	27	100	21	58	
EP6.11.32.40	EPS63	32	40	24	78	
EP8.11.27.50	EPS80	27	50	21	58	
new EP8.11.27.100	EPS80	27	100	21	58	
EP8.11.32.50	EPS80	32	50	24	78	
new EP8.11.32.100	EPS80	32	100	24	78	
EP8.11.40.55	EPS80	40	55	27	88	



Zubehör / Accessories / Accessoires / Yedekler



Fräseranzugsschrauben DIN 6367
Drawn in bolt DIN 6367
Vis de serrage DIN 6367
Alın sıkma civatası DIN 6367



Mitnehmersteine
Drive keys
Entraîneur
Kama



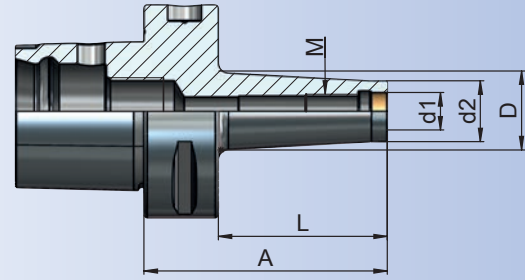
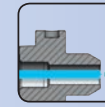
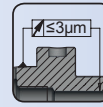
Spannschlüssel DIN 6368 für Aufsteckdorne
Wrench DIN 6368
Clé de serrage DIN 6368
Alın civatası sıkma anahtar DIN 6368



Milling Cutter Arbors for Screw-on type Milling Cutters

Axes Coupeur Fraisage Pour Vis-Sur Type Coupeurs de Fraisage

Vidalı tip frezeler için Takım Tutucular



Bestell-Nr. Order Nr. Référence Sipariş Nr.	EPS	M	d1	d2	A	L	D	Euro
EP3.12.08.30	EPS32	8	8,5	13	30	15	15	
EP3.12.10.30	EPS32	10	10,5	18	30	15	20	
EP3.12.12.35	EPS32	12	12,5	21	35	20	24	
EP3.12.16.40	EPS32	16	17	29	40	25	29	
EP4.12.08.30	EPS40	8	8,5	13	30	10	15	
EP4.12.10.35	EPS40	10	10,5	18	35	15	20	
EP4.12.12.40	EPS40	12	12,5	21	40	20	24	
EP4.12.16.45	EPS40	16	17	29	45	25	29	
EP5.12.08.50	EPS50	8	8,5	13	50	30	15	
EP5.12.08.75	EPS50	8	8,5	13	75	55	23	
EP5.12.10.50	EPS50	10	10,5	18	50	30	20	
EP5.12.10.75	EPS50	10	10,5	18	75	55	23	
EP5.12.12.50	EPS50	12	12,5	21	50	30	24	
EP5.12.12.75	EPS50	12	12,5	21	75	55	24	
EP5.12.16.50	EPS50	16	17	29	50	30	29	
EP5.12.16.75	EPS50	16	17	29	75	55	34	
EP6.12.08.50	EPS63	8	8,5	13	50	28	15	
EP6.12.08.75	EPS63	8	8,5	13	75	53	23	
EP6.12.10.50	EPS63	10	10,5	18	50	28	20	
EP6.12.10.75	EPS63	10	10,5	18	75	53	23	
EP6.12.12.50	EPS63	12	12,5	21	50	28	24	
EP6.12.12.75	EPS63	12	12,5	21	75	53	24	
EP6.12.16.50	EPS63	16	17	29	50	28	29	
EP6.12.16.75	EPS63	16	17	29	75	53	34	
EP8.12.08.85	EPS80	8	8,5	13	85	55	23	
EP8.12.10.85	EPS80	10	10,5	18	85	55	23	
EP8.12.12.85	EPS80	12	12,5	21	85	55	24	
EP8.12.16.85	EPS80	16	17	29	85	55	34	

Zubehör / Accessories / Accessoires / Yedekler



Verlängerungen für Einschraubfräser
Extensions for milling cutter arbors
Extension pour vis-sur-type coupeurs de fraisage
Vidalı tip frezeler için ara adaptör



Reduzierungen für Einschraubfräser
Reducing for milling cutter arbors
Extension pour vis-sur-type coupeurs de fraisage
Vidalı tip frezeler için ara adaptör



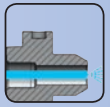
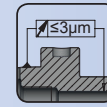
Bohrerhalter

EPS

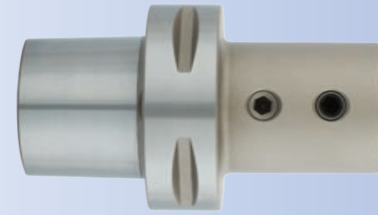
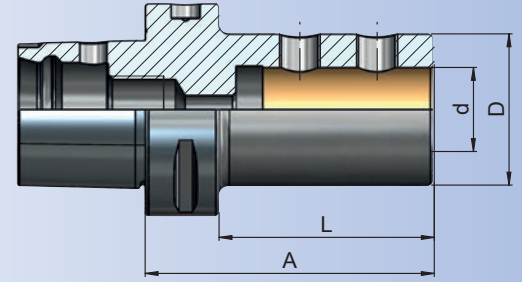
Boring bar holder

Porte foret

U-diril tutucu



Bestell-Nr. Order Nr. Référence Sipariş Nr.	EPS	d	A	L	D	Euro
EP3.51.16.56	EPS32	16	56	41	36	
EP3.51.20.60	EPS32	20	60	45	40	
EP4.51.16.56	EPS40	16	56	36	36	
EP4.51.20.60	EPS40	20	60	40	40	
EP4.51.25.77	EPS40	25	77	57	45	
EP5.51.16.65	EPS50	16	65	45	36	
EP5.51.20.60	EPS50	20	60	40	40	
EP5.51.25.71	EPS50	25	71	51	45	
EP5.51.32.75	EPS50	32	75	55	52	
EP6.51.16.70	EPS63	16	70	48	36	
EP6.51.20.70	EPS63	20	70	48	40	
EP6.51.25.72	EPS63	25	72	50	45	
EP6.51.32.75	EPS63	32	75	53	52	
EP6.51.40.85	EPS63	40	85	63	63	
EP8.51.16.80	EPS80	16	80	50	36	
EP8.51.20.80	EPS80	20	80	50	40	
EP8.51.25.85	EPS80	25	85	55	45	
EP8.51.32.90	EPS80	32	90	60	52	
EP8.51.40.95	EPS80	40	95	65	65	



Zubehör / Accessories / Accessoires / Yedekler



Spannschrauben
Clamping screw
Vis de serrage
Sıkma civatası



Reduzierbuche für Bohrstangenhalter
Reduction bushes for boring bar holder
Douille de réduction pour barre d'alésage
Delik kateri redüksiyonu

NC - Bohrfutter

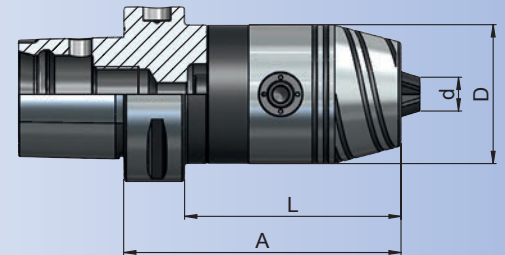
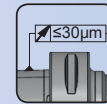
EPS

NC-drill chucks

Mandrin de perçage NC

NC tipi mandren tutucu

Bestell-Nr. Order Nr. Référence Sipariş Nr.	EPS	Spannbereich Capacity Capacité Kapasite d	A	L	D	Euro
EP3.15.13.105	EPS32	1-13	105	90	50	
EP4.15.13.110	EPS40	1-13	110	90	50	
EP5.15.13.110	EPS50	1-13	110	90	50	
EP5.15.16.115	EPS50	3-16	115	90	57	
EP6.15.13.110	EPS63	1-13	110	88	50	
EP6.15.16.115	EPS63	3-16	115	93	57	



Zubehör / Accessories / Accessoires / Yedekler



Ersatzteile
Spare Parts
Pièce de rechange
Yedek parçaları



Spannschlüssel
Wrench
Clé de serrage
Sıkma anahtarı

INFO

Technische Daten	10.06
Technical Data	10.06
Données Techniques	10.06
Teknik Bilgi	10.06

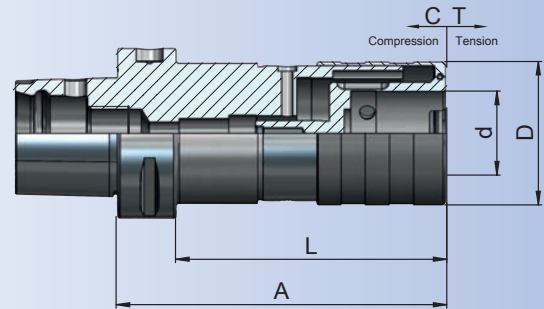


Quick-change tapping chucks with length compensation

Appareil à tarauder avec compensation longitudinale

Kılavuz çekme başlığı Giriş ve çıkış kompanzeli

Bestell-Nr. Order Nr. Référence Sipariş Nr.	EPS	Spannbereich Capacity Capacité Kapasite	d	A	L	D	C	T	Euro
EP3.16.12.80	EPS32	M2-M14	19	80	65	36,5	7	7	
EP4.16.12.80	EPS40	M2-M14	19	80	60	36,5	7	7	
EP4.16.20.110	EPS40	M5-M24	31	110	90	53,5	12	12	
EP5.16.12.80	EPS50	M2-M14	19	80	60	36,5	7	7	
EP5.16.20.115	EPS50	M5-M24	31	115	95	53,5	12	12	
EP6.16.12.90	EPS63	M2-M14	19	90	68	36,5	7	7	
EP6.16.20.120	EPS63	M5-M24	31	120	98	53,5	12	12	
EP6.16.36.170	EPS63	M14-M36	48	170	148	78	17,5	18	
EP8.16.12.85	EPS80	M2-M14	19	85	55	36,5	7	7	
EP8.16.20.110	EPS80	M5-M24	31	110	80	53,5	12	12	
EP8.16.36.160	EPS80	M14-M36	48	160	130	78	17,5	18	



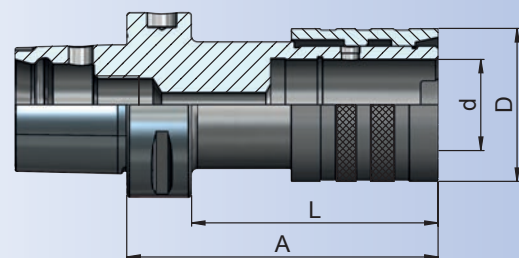
Gewindeschneid - Schnellwechselfutter ohne Längenausgleich

Quick-change tapping chucks without length compensation

Appareil à tarauder sans compensation longitudinale

Kılavuz çekme başlığı sabit

Bestell-Nr. Order Nr. Référence Sipariş Nr.	EPS	Spannbereich Capacity Capacité Kapasite	d	A	L	D	Euro
EP4.16.12.1.60	EPS40	M2-M14	19	60	40	38	
EP5.16.12.1.60	EPS50	M2-M14	19	60	40	38	
EP5.16.20.1.95	EPS50	M5-M24	31	95	75	52	
EP6.16.20.1.105	EPS63	M5-M24	31	105	83	52	
EP6.16.36.1.120	EPS63	M14-M36	48	120	98	78	



Zubehör / Accessories / Accessoires / Yedekler



Schnellwechseleinsätze
Tapping collets
Dovilles de taraudage
Kılavuz tutucu

9.34-9.36

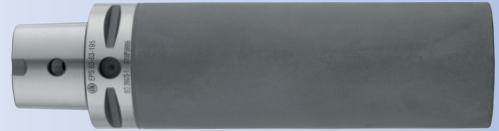
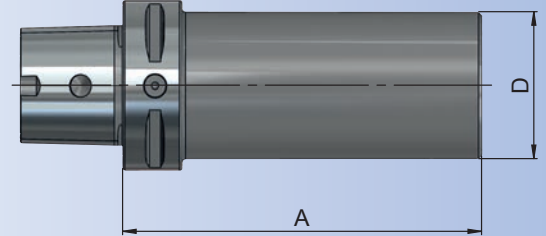


Boring bar blanks for the production of special tools

Barre d'alésage pour la fabrication d'outils spéciaux

Özel takım yapma amaçlı yarı mamul

Bestell-Nr. Order Nr. Référence Sipariş Nr.	EPS	A	D	Euro
EP3.17.32.125	EPS32	125	32	
EP4.17.40.165	EPS40	165	40	
new EP4.17.70.100	EPS40	100	70	
EP5.17.50.175	EPS50	175	50	
new EP5.17.75.70	EPS50	70	75	
EP6.17.63.195	EPS63	195	63	
new EP6.17.63.310	EPS63	310	63	
new EP6.17.80.250	EPS63	250	80	
new EP6.17.120.160	EPS63	160	120	
EP8.17.80.200	EPS80	200	80	
new EP8.17.90.310	EPS80	310	90	



Ausführung : Steilkegel und Bund gehärtet (52+2 HRC) und geschliffen,
Schaft weich zur weiteren Bearbeitung.

Version : Cone and flange hardened (52+2 HRC) and grinded.
Soft body for later processing.

Version : Cône et collerette durcir (52+2 HRC) et rectifiés.
Corps doux pour un usinage ultérieur.

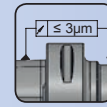
Teknik özelliği: Konik ve Flanş kısmı sertleştirilmiş (52+2 HRC) ve taşlanmıştır.
Bara kısmı işlenebilir yumuşaklıktadır.



Test Arbors

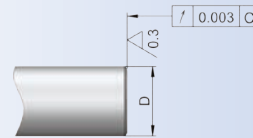
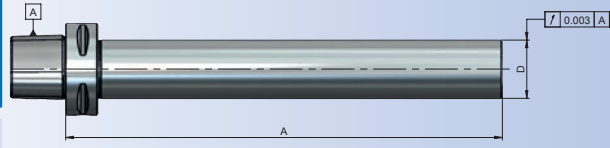
Mandrin de contrôle

Fener mili kontrol mastarı



Bestell-Nr. Order Nr. Référence Sipariş Nr.	EPS	A	D	Euro
--	-----	---	---	------

new EP3.18.25.150	EPS32	150	25	
new EP4.18.25.150	EPS40	150	25	
new EP5.18.32.200	EPS50	200	32	
new EP6.18.40.300	EPS63	300	40	
new EP8.18.40.300	EPS80	300	40	



Type G

Verwendung : Zur Abnahme von Werkzeugmaschinen gemäß ISO-Empfehlung R 230

Application : For acceptance tests of machine tools in accordance with ISO-recommendation R 230

Application : Pour la recette technique des machines conforme recommandation ISO R 230

Açıklama : Tezgahları devreye alırken ISO Normu R 230 sisteminde uygunluğunu kontrol etmek için

Lieferung : Im Holzkasten mit Prüfprotokoll

Included : Wooden Box with certificate

Inclus : Coffet en bois avec certificat

Teslim Şekli : Sandığı ve Kontrol Sertifikasıyla birlikte

Kontrolldorne können auch als Version "stirnseitig geschliffen" optional bestellt werden (Beispiel Bestellnummer: EP6.18.40.300.G)

Test arbors can be ordered in version "face grinded" optionally (Example order code no.: EP6.18.40.300.G)

Mandrins de contrôle peuvent être commandés avec version "front aiguiser" comme option (exemple commande no.: EP6.18.40.300.G)

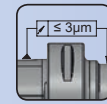
İsteğe bağlı "alın taşlanmış" sipariş edilebilir. (Örnek Sipariş Nr.: EP6.18.40.300.G)

Einrichtehalter

Setting-holder

Porte-outil de réglage

Fener mili pozisyon kontrol mastarı



Bestell-Nr. Order Nr. Référence Sipariş Nr.	EPS	A	D	H	S	Euro
--	-----	---	---	---	---	------

new EP6.19.90.55	EPS63	55	90	8	5	
-------------------------	-------	----	----	---	---	--

Lieferung : Im Holzkasten mit Prüfprotokoll

Included : Wooden Box with certificate

Inclus : Coffet en bois avec certificat

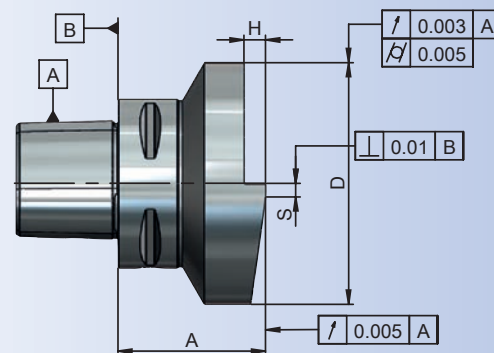
Teslim Şekli : Sandığı ve Kontrol Sertifikasıyla birlikte

Verwendung : Zur Abnahme von Werkzeugmaschinen gemäß ISO-Empfehlung R 230

Application : For acceptance tests of machine tools in accordance with ISO-recommendation R 230

Application : Pour la recette technique des machines conforme recommandation ISO R 230

Açıklama : Tezgahları devreye alırken ISO Normu R 230 sisteminde uygunluğunu kontrol etmek için





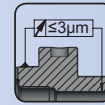
Schrumpffutter zum Spannen von HM Werkzeugschäften

EPS

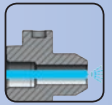
Shrink chuck for mounting
of solid carbide cutters

Mandrin de frettage pour le serrage
des queue d'outils carbure

Isıtmalı takım tutucular
Şaftlı karbür olan takımlar için

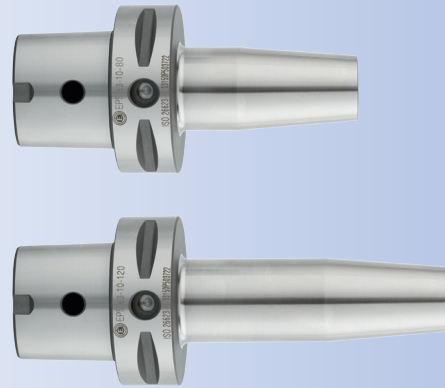
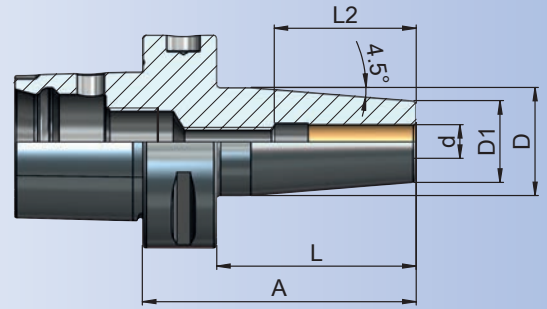


STANDARD
G 2.5
25.000
min⁻¹



SPECIAL
max.
G 2.5
60.000
min⁻¹

Bestell-Nr. Order Nr. Référence Sipariş Nr.	EPS	d	A	L	D1	D	L2	Euro
EP3.25.06.65	EPS32	6	65	50	21	27	36	
EP3.25.08.65	EPS32	8	65	50	21	27	36	
EP3.25.10.70	EPS32	10	70	55	24	32	42	
EP3.25.12.75	EPS32	12	75	55	24	32	47	
EP4.25.06.75	EPS40	6	75	55	21	27	36	
EP4.25.08.75	EPS40	8	75	55	21	27	36	
EP4.25.10.75	EPS40	10	75	55	24	32	42	
EP4.25.12.75	EPS40	12	75	55	24	32	47	
EP4.25.14.80	EPS40	14	80	60	27	34	47	
EP4.25.16.80	EPS40	16	80	60	27	34	50	
EP5.25.06.75	EPS50	6	75	55	21	27	36	
EP5.25.08.75	EPS50	8	75	55	21	27	36	
EP5.25.10.75	EPS50	10	75	55	24	32	42	
EP5.25.12.75	EPS50	12	75	55	24	32	47	
EP5.25.14.80	EPS50	14	80	60	27	34	47	
EP5.25.16.80	EPS50	16	80	60	27	34	50	
EP5.25.18.80	EPS50	18	80	60	33	42	50	
EP5.25.20.85	EPS50	20	85	65	33	42	52	
EP5.25.25.90	EPS50	25	90	70	44	53	58	
EP5.25.32.90	EPS50	32	90	70	44	53	62	
EP6.25.03.80	EPS63	3	80	58	10	16	14	
EP6.25.04.80	EPS63	4	80	58	12	20	17	
EP6.25.05.80	EPS63	5	80	58	12	21	20	
EP6.25.06.80	EPS63	6	80	58	21	27	36	
EP6.25.06.120	EPS63	6	120	98	21	27	36	
EP6.25.06.160	EPS63	6	160	138	21	27	36	



Hartmetall Schafttoleranz : h6
Carbide shank tolerance : h6
Carbure tolérance d'arbre : h6
Karbür şaft toleransı : h6

Lieferumfang: Einstellschraube
Included : Adjusting screw
Inclus: Vis de réglage
Teslim şekli : Dayama civatası ile birlikte



ab Ø 6 können Wucht- und Kühlkanalbohrungen als Option bestellt werden.
(Beispiel Bestellnummer: EP3.25.10.70.KKB / EP3.25.10.70.B / EP3.25.10.70.DB)

from Ø 6 balancing and coolant channels borings can be ordered as option.
(Example order code no.: EP3.25.10.70.KKB / EP3.25.10.70.B / EP3.25.10.70.DB)

commencer Ø 6 équilibrage perçage et conduits pour arrosage peuvent être commandes comme l'option(exemple commande no.: EP3.25.10.70.KKB / EP3.25.10.70.B / EP3.25.10.70.DB)

İsteğe bağlı Ø 6 ve üzeri ürünler alından su vermeli sipariş edilebilir.
(Örnek Sipariş Nr.: EP3.25.10.70.KKB / EP3.25.10.70.B / EP3.25.10.70.DB)

Zubehör / Accessories / Accessoires / Yedekler



Einstellschraube DIN 916
Adjusting screw DIN 916
Vis de réglage DIN 916
Dayama civatası DIN 916

4.16

INFO

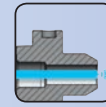
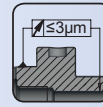
Technische Daten 10.08
Technical Data 10.08
Donées Techniques 10.08
Teknik Bilgi 10.08



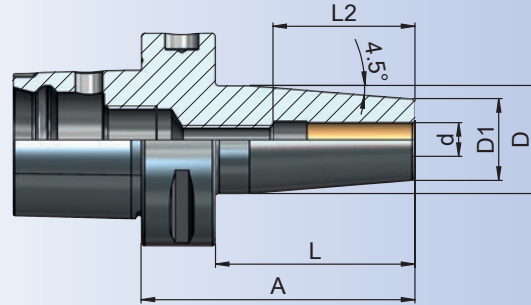
Shrink chuck for mounting
of solid carbide cutters

Mandrin de frettage pour le serrage
des queue d'outils carbure

Isıtmalı takım tutucular
Şaftlı karbür olan takımlar için

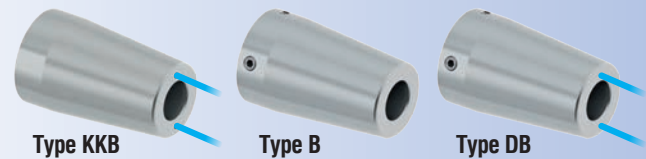


Bestell-Nr. Order Nr. Référence Sipariş Nr.	EPS	d	A	L	D1	D	L2	Euro
EP6.25.08.80	EPS63	8	80	58	21	27	36	
EP6.25.08.120	EPS63	8	120	98	21	27	36	
EP6.25.08.160	EPS63	8	160	138	21	27	36	
EP6.25.10.80	EPS63	10	80	58	24	32	42	
EP6.25.10.120	EPS63	10	120	98	24	32	42	
EP6.25.10.160	EPS63	10	160	138	24	32	42	
EP6.25.12.80	EPS63	12	80	58	24	32	47	
EP6.25.12.120	EPS63	12	120	98	24	32	47	
EP6.25.12.160	EPS63	12	160	138	24	32	47	
EP6.25.14.85	EPS63	14	85	63	27	34	47	
EP6.25.14.120	EPS63	14	120	98	27	34	47	
EP6.25.14.160	EPS63	14	160	138	27	34	47	
EP6.25.16.85	EPS63	16	85	63	27	34	50	
EP6.25.16.120	EPS63	16	120	98	27	34	50	
EP6.25.16.160	EPS63	16	160	138	27	34	50	
EP6.25.18.85	EPS63	18	85	63	33	42	50	
EP6.25.18.120	EPS63	18	120	98	33	42	50	
EP6.25.18.160	EPS63	18	160	138	33	42	50	
EP6.25.20.85	EPS63	20	85	63	33	42	52	
EP6.25.20.120	EPS63	20	120	98	33	42	52	
EP6.25.20.160	EPS63	20	160	138	33	42	52	
EP6.25.25.90	EPS63	25	90	68	44	53	58	
EP6.25.25.120	EPS63	25	120	98	44	53	58	
EP6.25.25.160	EPS63	25	160	138	44	53	58	
EP6.25.32.95	EPS63	32	95	73	44	53	62	
EP6.25.32.120	EPS63	32	120	98	44	53	62	
EP6.25.32.160	EPS63	32	160	138	44	53	62	



Hartmetall Schafttoleranz : h6
Carbide shank tolerance : h6
Carbure tolérance d'arbre : h6
Karbür şaft toleransı : h6

Lieferumfang: Einstellschraube
Included: Adjusting screw
Inclus: Vis de réglage
Teslim şekli: Dayama civatası ile birlikte



ab Ø 6 können Wucht- und Kühlkanalbohrungen als Option bestellt werden.
(Beispiel Bestellnummer: EP6.25.08.80.KKB / EP6.25.08.80.B / EP6.25.08.80.DB)

from Ø 6 balancing and coolant channels borings can be ordered as option.
(Example order code no.: EP6.25.08.80.KKB / EP6.25.08.80.B / EP6.25.08.80.DB)

commencer Ø 6 équilibrage perçage et conduits pour arrosage peuvent être commandes comme l'option(exemple commande no.: EP6.25.08.80.KKB / EP6.25.08.80.B / EP6.25.08.80.DB)

İsteğe bağlı Ø 6 ve üzeri ürünler alından su vermeli sipariş edilebilir.
(Örnek Sipariş Nr.: EP6.25.08.80.KKB / EP6.25.08.80.B / EP6.25.08.80.DB)

Zubehör / Accessories / Accessoires / Yedekler



Einstellschraube DIN 916
Adjusting screw DIN 916
Vis de réglage DIN 916
Dayama civatası DIN 916

INFO

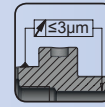
Technische Daten	10.08
Technical Data	10.08
Donées Techniques	10.08
Teknik Bilgi	10.08



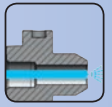
Shrink chuck for mounting
of solid carbide cutters

Mandrin de frettage pour le serrage
des queue d'outils carbure

Isıtmalı takım tutucular
Şaftlı karbür olan takımlar için

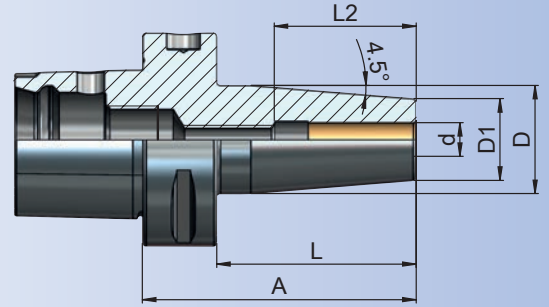


STANDARD
G 2.5
25.000
min⁻¹



SPECIAL
max.
G 2.5
60.000
min⁻¹

Bestell-Nr. Order Nr. Référence Sipariş Nr.	EPS	d	A	L	D1	D	L2	Euro
EP8.25.06.85	EPS80	6	85	55	21	27	36	
EP8.25.08.85	EPS80	8	85	55	21	27	36	
EP8.25.10.85	EPS80	10	85	55	24	32	42	
EP8.25.12.85	EPS80	12	85	55	24	32	47	
EP8.25.14.85	EPS80	14	85	55	27	34	47	
EP8.25.16.90	EPS80	16	90	60	27	34	50	
EP8.25.18.90	EPS80	18	90	60	33	42	50	
EP8.25.20.90	EPS80	20	90	60	33	42	52	
EP8.25.25.90	EPS80	25	90	60	44	53	58	
EP8.25.32.90	EPS80	32	90	60	44	53	62	



Hartmetall Schafttoleranz : h6
Carbide shank tolerance : h6
Carbure tolérance d'arbre : h6
Karbür shaft toleransi : h6

Lieferumfang: Einstellschraube
Included : Adjusting screw
Inclus: Vis de réglage
Teslim şekli : Dayama civatası ile birlikte



ab Ø 6 können Wucht- und Kühlkanalbohrungen als Option bestellt werden.
(Beispiel Bestellnummer: EP8.25.10.85.KKB / EP8.25.10.85.B / EP8.25.10.85.DB)

from Ø 6 balancing and coolant channels borings can be ordered as option.
(Example order code no.: EP8.25.10.85.KKB / EP8.25.10.85.B / EP8.25.10.85.DB)

commencer Ø 6 équilibrage perçage et conduits pour arrosage peuvent être commandes comme l'option(exemple commande no.: EP8.25.10.85.KKB / EP8.25.10.85.B / EP8.25.10.85.DB)

İsteğe bağlı Ø 6 ve üzeri ürünler alından su vermeli sipariş edilebilir.
(Örnek Sipariş Nr.: EP8.25.10.85.KKB / EP8.25.10.85.B / EP8.25.10.85.DB)

INFO

Technische Daten	10.08
Technical Data	10.08
Donées Techniques	10.08
Teknik Bilgi	10.08

Zubehör / Accessories / Accessoires / Yedekler



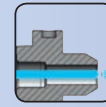
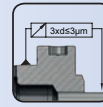
Einstellschraube DIN 916
Adjusting screw DIN 916
Vis de réglage DIN 916
Dayama civatası DIN 916



Hydraulic expansions chuck

Mandrins expansibles hydrauliques

Hidrolik takım tutucular



Bestell-Nr.
Order Nr.
Référence
Sipariş Nr.

EPS d A L1 D1 D L2 Euro

EP3.65.12.80 EPS32 12 80 40 32 50 46

EP4.65.06.80 EPS40 6 80 40 26 50 37

EP4.65.08.80 EPS40 8 80 40 28 50 37

EP4.65.10.85 EPS40 10 85 40 30 50 41

EP4.65.12.85 EPS40 12 85 40 32 50 46

EP5.65.06.65 EPS50 6 65 30 26 50 37

EP5.65.08.65 EPS50 8 65 30 28 50 37

EP5.65.10.75 EPS50 10 75 40 30 50 41

EP5.65.12.80 EPS50 12 80 40 32 50 46

EP5.65.14.80 EPS50 14 80 40 34 50 46

EP5.65.16.85 EPS50 16 85 46 38 50 49

EP5.65.18.85 EPS50 18 85 46 40 50 49

EP5.65.20.85 EPS50 20 85 46 42 50 51

EP5.65.25.95 EPS50 25 95 - 49,5 55 57

EP6.65.06.65 EPS63 6 65 25 26 50 37

EP6.65.08.65 EPS63 8 65 25 28 50 37

EP6.65.10.75 EPS63 10 75 35 30 50 41

EP6.65.12.80 EPS63 12 80 40 32 50 46

EP6.65.14.80 EPS63 14 80 40 34 50 46

EP6.65.16.85 EPS63 16 85 46 38 50 49

EP6.65.18.85 EPS63 18 85 46 40 50 49

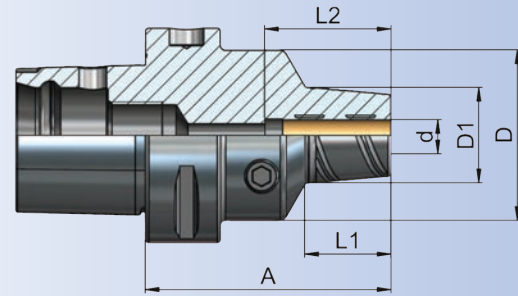
EP6.65.20.85 EPS63 20 85 46 42 50 51

EP6.65.25.95 EPS63 25 95 - 49,5 55 57

EP6.65.32.100 EPS63 32 100 - 56 63 61

EP8.65.20.95 EPS80 20 95 46 42 50 51

EP8.65.32.105 EPS80 32 105 - 56 63 61



Schafttoleranz : h6
Shank tolerance : h6
Tolérance d'arbre : h6
Şaft toleransı : h6

Lieferumfang: Einstellschraube und Spannschlüssel
Included : Adjusting screw and wrench
Inclus: Vis de réglage et clé de serrage
Teslim şekli : Dayama civatası ve anahtarı ile birlikte

INFO

Technische Daten 10.10
Technical Data 10.10
Donées Techniques 10.10
Teknik Bilgi 10.10

Zubehör / Accessories / Accessoires / Yedekler



Reduzierungen
Reducing arbor
Douille de réduction
Pens



Einstellschraube DIN 916
Adjusting screw DIN 916
Vis de réglage DIN 916
Dayama civatası DIN 916



Spannschlüssel
Wrench
Clé de serrage
Sıkma anahtarı



Büchsenzieher für Reduzierungen
Sleeve remover for reducing arbor
Clé étirage pour douilles
Hidrolik Takım Pens Çıkarma Anahtarı



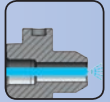
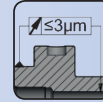
Bohrerhalter Form E2

EPS

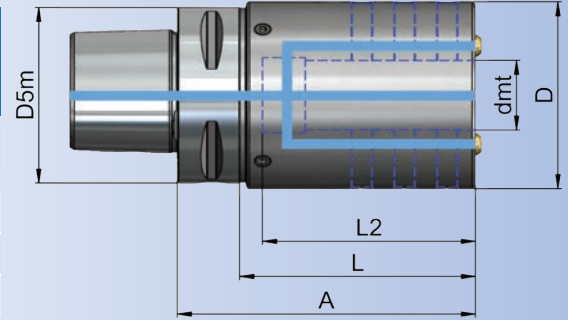
Boring bar holder Form E2

Porte-outil pour barre d'alésage Form E2

Delik kater tutucu - Alından su vermeli Form E2



Bestell-Nr. Order Nr. Référence Sipariş Nr.	EPS	D5m	dmt	D	A	L	L2	Euro
new EP5.52.25.100	EPS50	50	25	63	100	80	80	
new EP6.52.25.100	EPS63	63	25	63	100	78	80	
new EP6.52.32.105	EPS63	63	32	67	105	83	90	
new EP6.52.40.110	EPS63	63	40	77	110	83	95	
new EP8.52.25.100	EPS80	80	25	63	100	70	80	
new EP8.52.32.105	EPS80	80	32	67	105	75	90	
new EP8.52.40.110	EPS80	80	40	77	110	80	95	



Zubehör / Accessories / Accessoires / Yedekler



Reduzierbuchse für Bohrstangenhalter
Reduction bushes for boring bar holder
Douille de réduction pour barre d'alésage
Delik kateri redüksiyonu

4.20

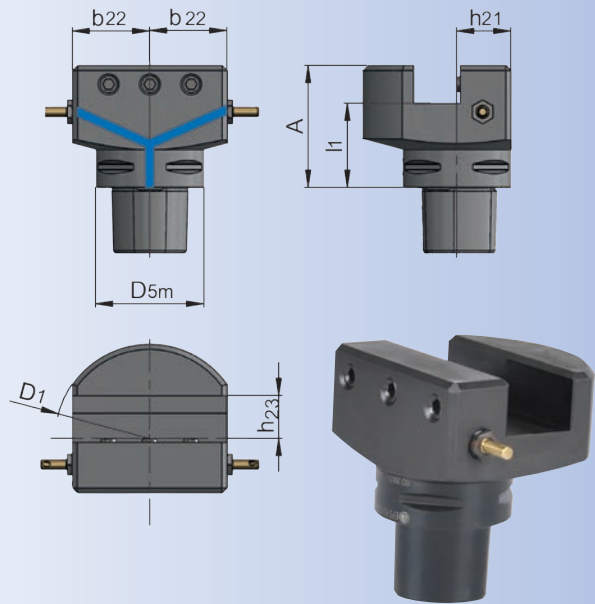


Toolholder radial

Porte outil radial

Radyal kater tutucu

Bestell-Nr. Order Nr. Référence Sipariş Nr.	EPS	D _{5M}	D ₁	b ₂₂	h ₂₁	h ₂₃	l ₁	A	Euro
EP5.41.20.58	EPS50	50	90	38	25,1	20	40	58	
EP6.41.20.60	EPS63	63	90	38	31,6	20	42	60	
EP6.41.25.71	EPS63	63	110	45	31,6	25	49	71	
EP6.41.32.71	EPS63	63	130	50	32	32	46	71	
EP8.41.32.85	EPS80	80	142	55	40,5	32	60	85	



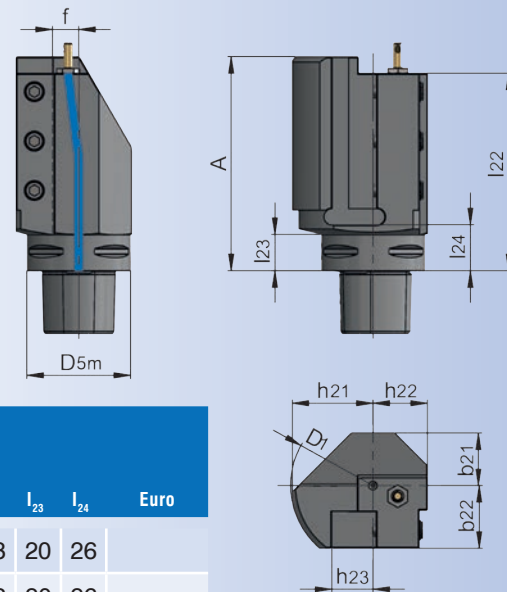
Werkzeughalter Axial

Toolholder axial

Porte outil axial

Eksenel kater tutucu

Bestell-Nr. Order Nr. Référence Sipariş Nr.	EPS	D _{5M}	D ₁	b ₂₁	b ₂₂	f	h ₂₁	h ₂₂	h ₂₃	A	l ₂₂	l ₂₃	l ₂₄	Euro
EP5.42.20.98.R	EPS50	50	90	29	30	12	41	33	20	98	88	20	26	
EP5.42.20.98.L	EPS50	50	90	29	30	12	41	33	20	98	88	20	26	
EP6.42.20.100.R	EPS63	63	90	29	30	12	41	33	20	100	90	22	25	
EP6.42.20.100.L	EPS63	63	90	29	30	12	41	33	20	100	90	22	25	
EP6.42.25.130.R	EPS63	63	100	32	38	16	50	33	25	130	120	22	28	
EP6.42.25.130.L	EPS63	63	100	32	38	16	50	33	25	130	120	22	28	
EP8.42.32.140.R	EPS80	80	110	40	40	15	55	30	32	140	130	30	35	
EP8.42.32.140.L	EPS80	80	110	40	40	15	55	30	32	140	130	30	35	





Triplex Werkzeughalter Axial

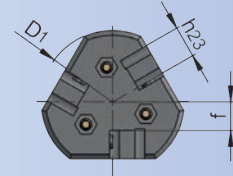
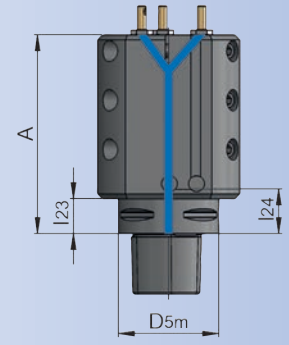
EPS

Triplex toolholder axial

Triplex porte outil axial

Üçlü eksenel kater tutucu

Bestell-Nr. Order Nr. Référence Sipariş Nr.	EPS	D _{5M}	D ₁	f	h23	A	I23	I24	Euro
EP5.43.20.123.R	EPS50	50	90	18	20	123	20	26	
EP5.43.20.123.L	EPS50	50	90	18	20	123	20	26	
EP6.43.20.125.R	EPS63	63	90	18	20	125	22	28	
EP6.43.20.125.L	EPS63	63	90	18	20	125	22	28	
EP8.43.32.150.R	EPS80	80	120	20	32	150	30	36	
EP8.43.32.150.L	EPS80	80	120	20	32	150	30	36	



Duplex Werkzeughalter Axial

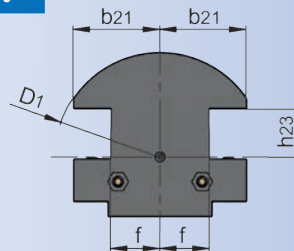
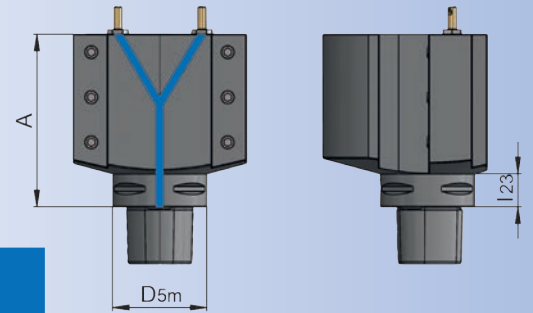
EPS

Duplex toolholder axial

Duplex porte outil axial

İkili eksenel kater tutucu

Bestell-Nr. Order Nr. Référence Sipariş Nr.	EPS	D _{5M}	D1	b21	f	h23	A	I23	Euro
EP6.44.32.115	EPS63	63	140	58	33	32	115	22	

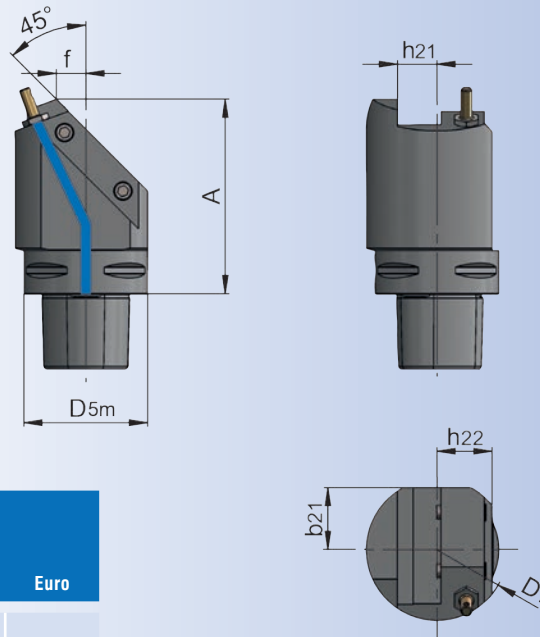




Toolholder 45°

Porte-outil 45°

Kater tutucu 45°



Bestell-Nr. Order Nr. Référence Sipariş Nr.	EPS	D _{5M}	D ₁	b ₂₁	f	h ₂₁	h ₂₂	A	Euro
EP5.45.20.97.R	EPS50	50	72	30,6	15	20	26	97	
EP5.45.20.97.L	EPS50	50	72	30,6	15	20	26	97	
EP6.45.20.99.R	EPS63	63	72	31,5	15	20	28	99	
EP6.45.20.99.L	EPS63	63	72	31,5	15	20	28	99	
EP8.45.32.135.R	EPS80	80	140	45	17	32	40	135	
EP8.45.32.135.L	EPS80	80	140	45	17	32	40	135	

